

# Race Weather Briefing

## Cruising Division

### 0900 CDT 22 JULY 2022



Chris Bedford, CCM  
Sailing Weather Service, LLC  
[cbedford@sailwx.com](mailto:cbedford@sailwx.com)

# Monitor *official* forecasts and warnings

Available via continuous VHF broadcast NOAA All Hazards Radio.

Don't assume your weather app is up-to-date. For example,  
Radar imagery can be delayed up to 15 minutes or more!

GRIB files are not forecasts. They are computer GUIDANCE.  
Forecasts are created using observations, multiple sources of computer  
guidance, experience, and meteorological knowledge.

You are responsible for the safety of your crew.  
Weather can and will change quickly.  
Monitor official sources for up-to-date information.  
Be pro-active. Safety first. Racing second.



sailwx.com/  
race-to-mackinac

The screenshot displays the Sailing Weather Service website. At the top left is the logo for Sailing Weather Service. The main header includes navigation links for Home, About, Blog, Contact, File Share, and Members, along with a user login button. The central focus is the 'YACHT CLUB SUPPORT PAGE' for the Chicago Yacht Club, which features a 'GRIB FORECAST' section. This section offers a 'GRIB Download' button and provides information about the 'CLOUDRUN' model, including its resolution and a link to the forecast page. To the right, there is a 'REGIONAL NOAA TEXT FORECAST' section with buttons for 'Lake Superior' and 'Mid-Lake'. Below this is an 'NDBC Station 45198' data box showing current weather conditions for Chicago Buoy. Further down, there are sections for 'SATellite', 'REGIONAL RADAR', and 'LOCAL RADAR' maps. At the bottom, there are 'FORECAST CHARTS' for 'DAY 1', 'DAY 2', and 'DAY 3'.

**SAILING WEATHER SERVICE**  
Meteorological Consulting for Competitive Sailing and Sport

Home About Blog Contact File Share Members

**YACHT CLUB SUPPORT PAGE**  
Chicago Yacht Club

**GRIB FORECAST**

Click below to download FREE ~2km resolution WRF model over Lakes Michigan and Huron.

Model produced using **CLOUDRUN**  
<https://cloudrun.co>  
High resolution custom WRF model forecasts from your browser.

**GRIB Download**

**REGIONAL NOAA TEXT FORECAST**

Routing links take you to the **NOAA MARINE WACS** for Lake Michigan:

**Lake Superior** **Mid-Lake**

**GRIB FORECAST**

The following links to the NOAA Great Lakes WWS Wave model for all of the Great Lakes. Forecast is updated twice per day. Click below and save the wave forecast to your routing software GRIB folder:

**GRIB Download**

**NDBC Station 45198**

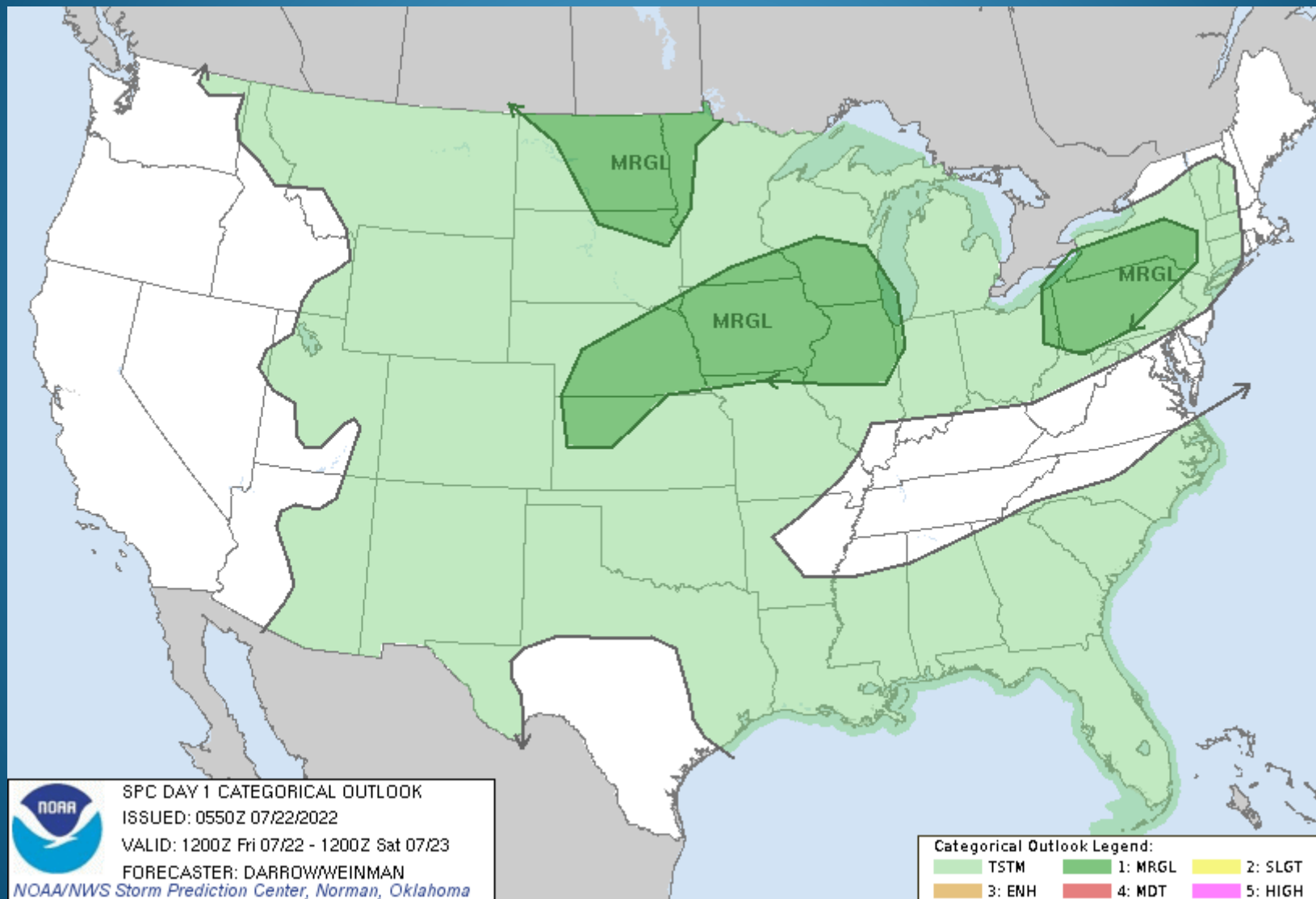
Chicago Buoy  
41.862N 87.063W  
5:10 pm CDT  
2210 GMT 07/13/2022  
Wind: N 110° L 11.7 kt

**SATellite** **REGIONAL RADAR** **LOCAL RADAR**

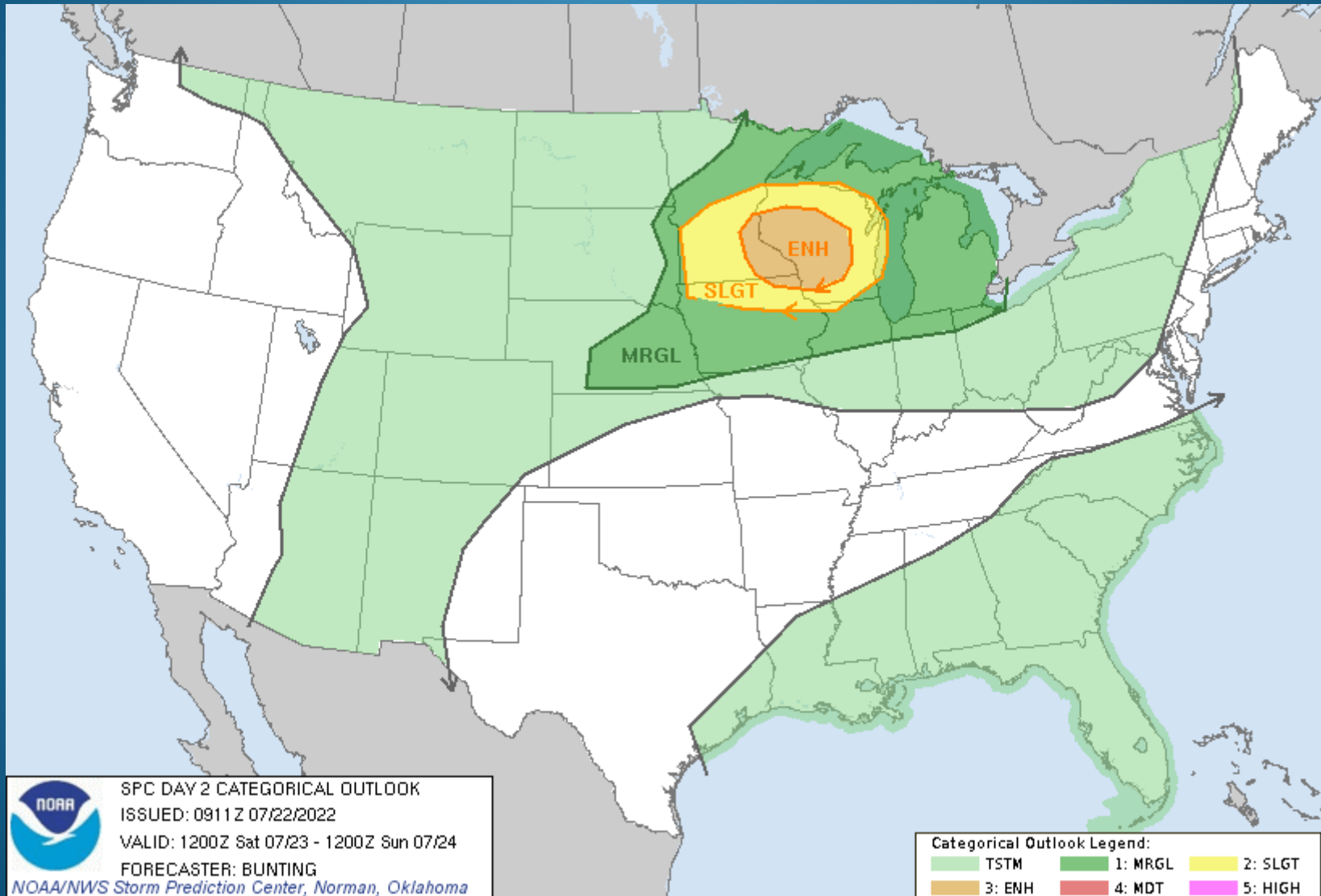
**FORECAST CHARTS**

**DAY 1** **DAY 2** **DAY 3**

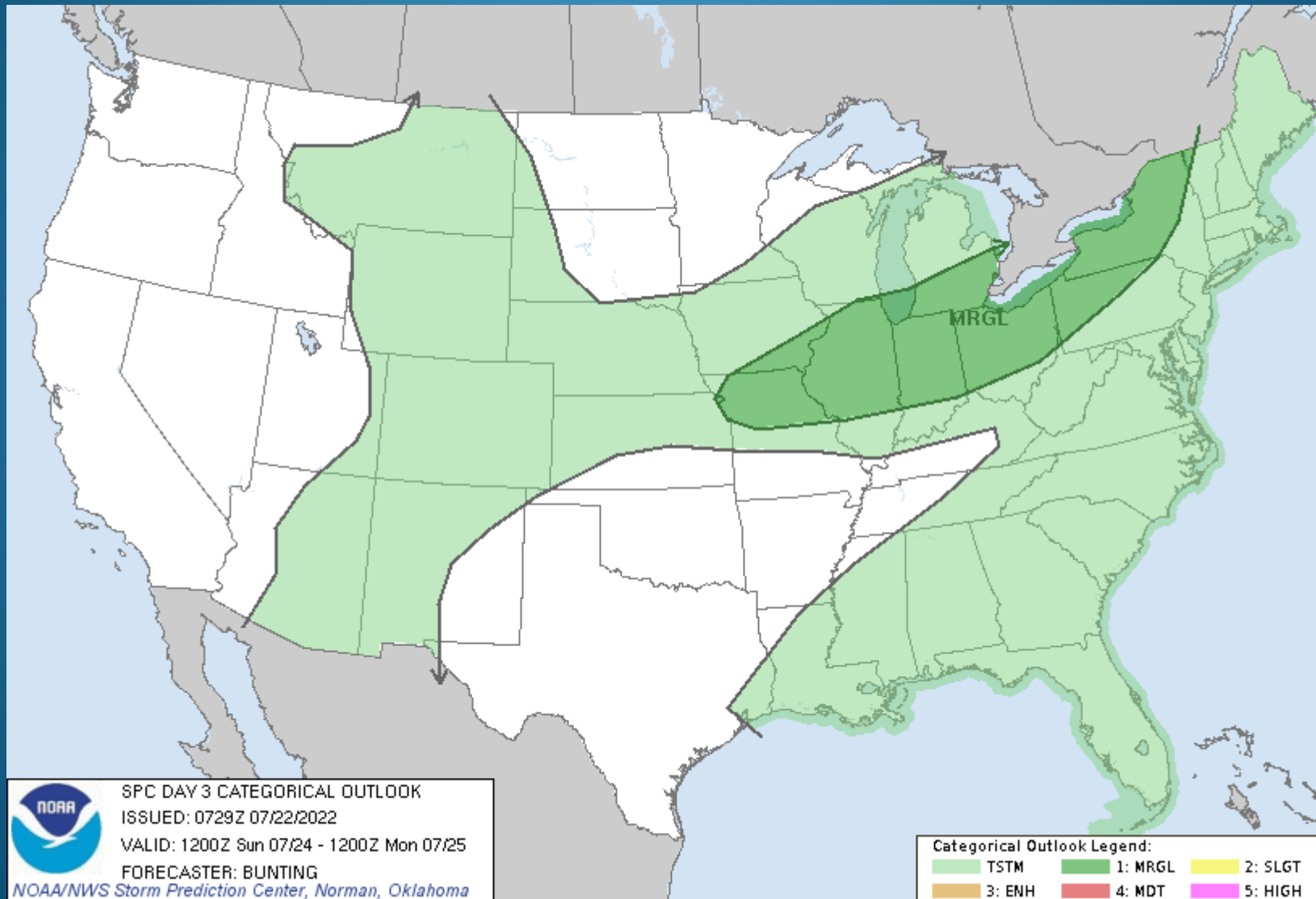
# Severe Weather Outlook - Today



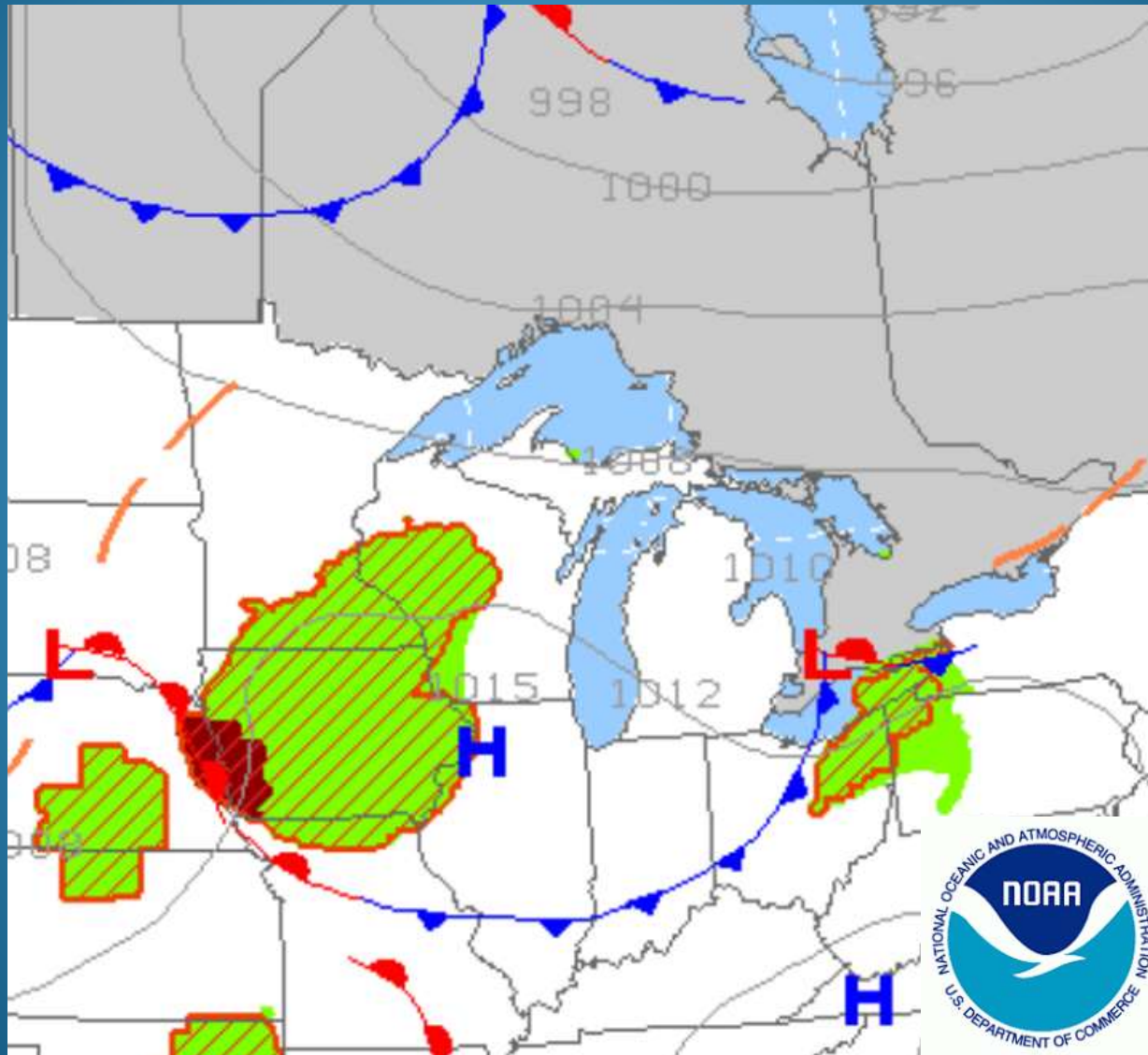
# Severe Weather Outlook - Tomorrow



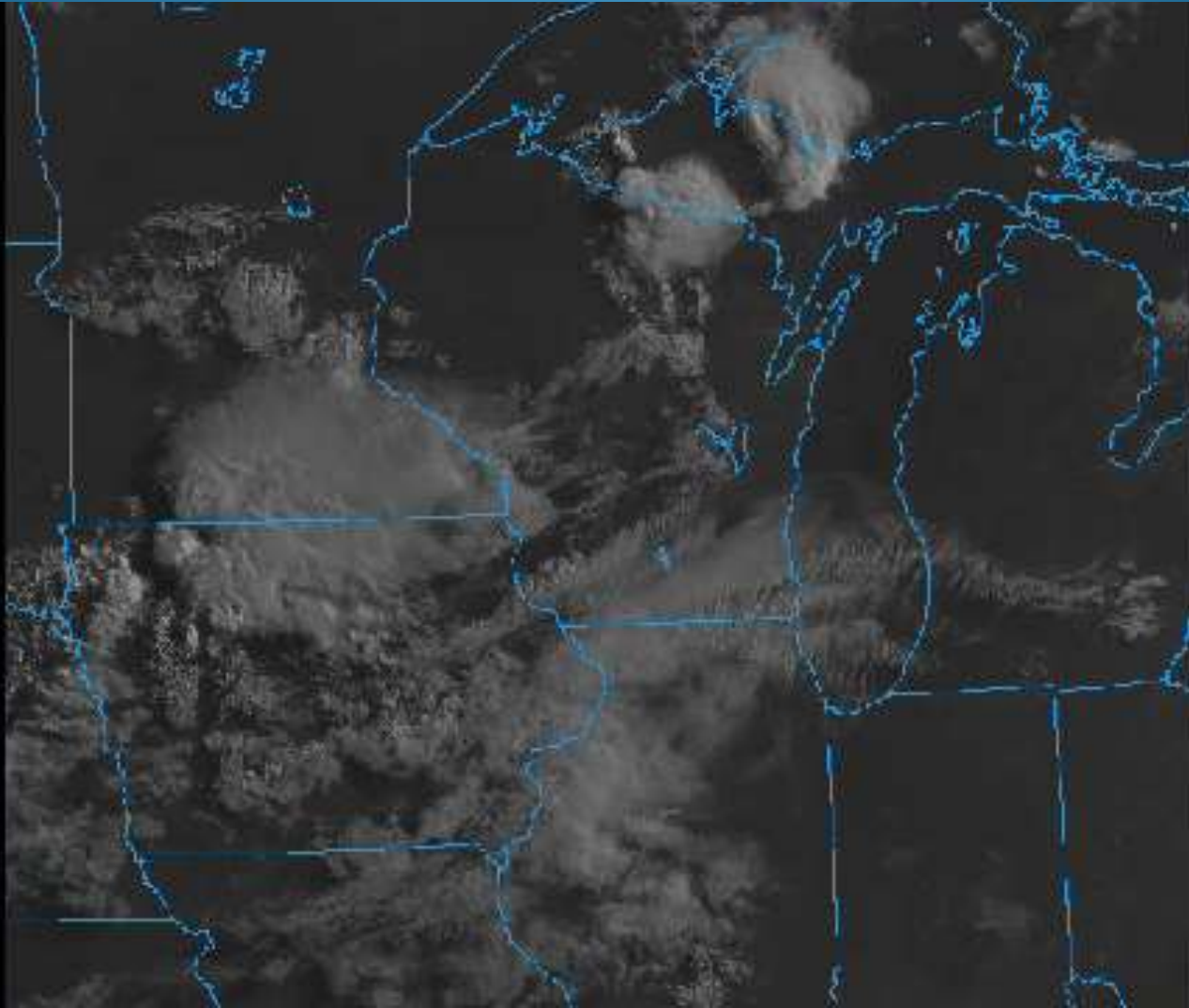
# Severe Weather Outlook - Sunday



# Surface Weather Map – Friday AM

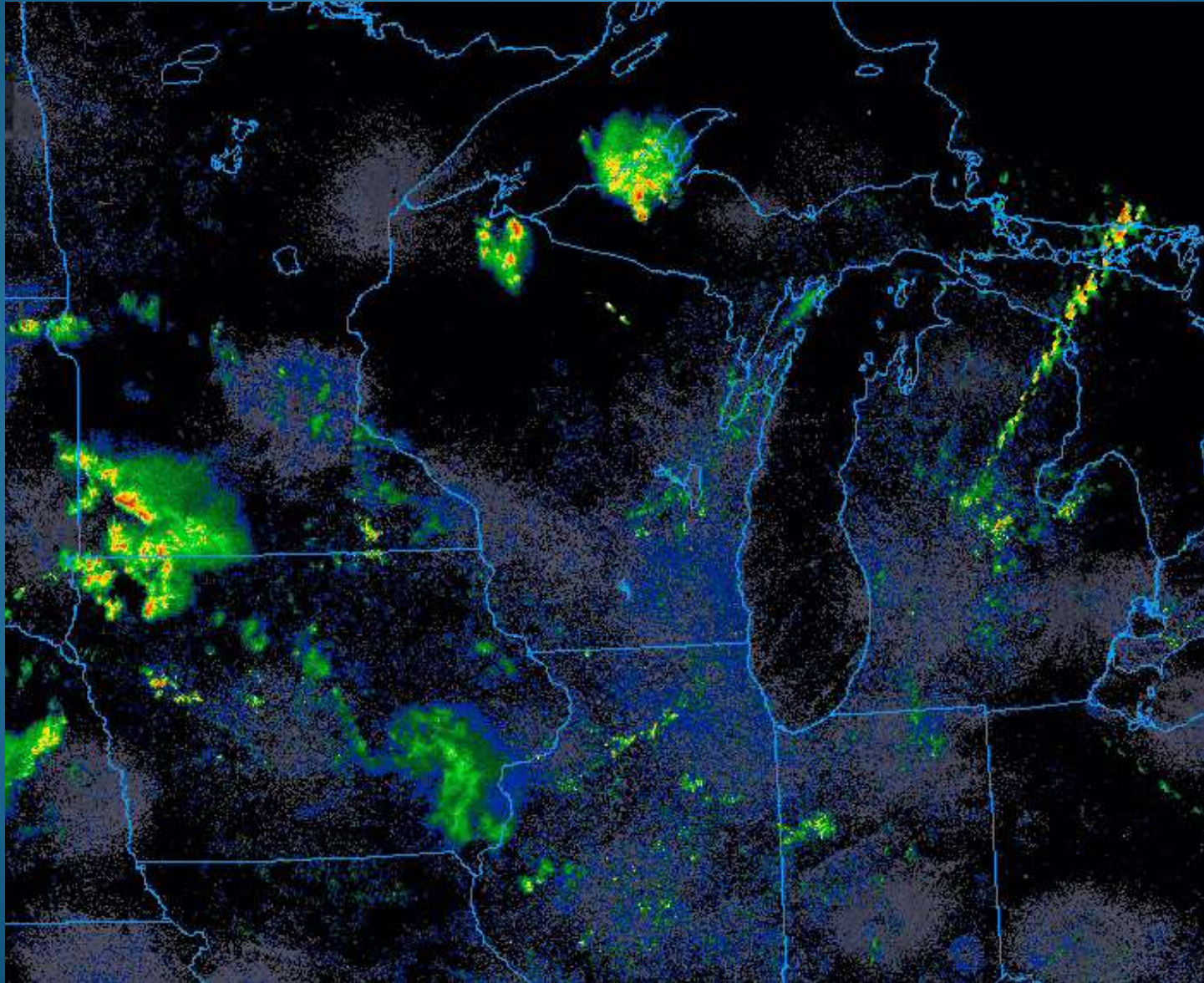


# Satellite Loop – Friday AM

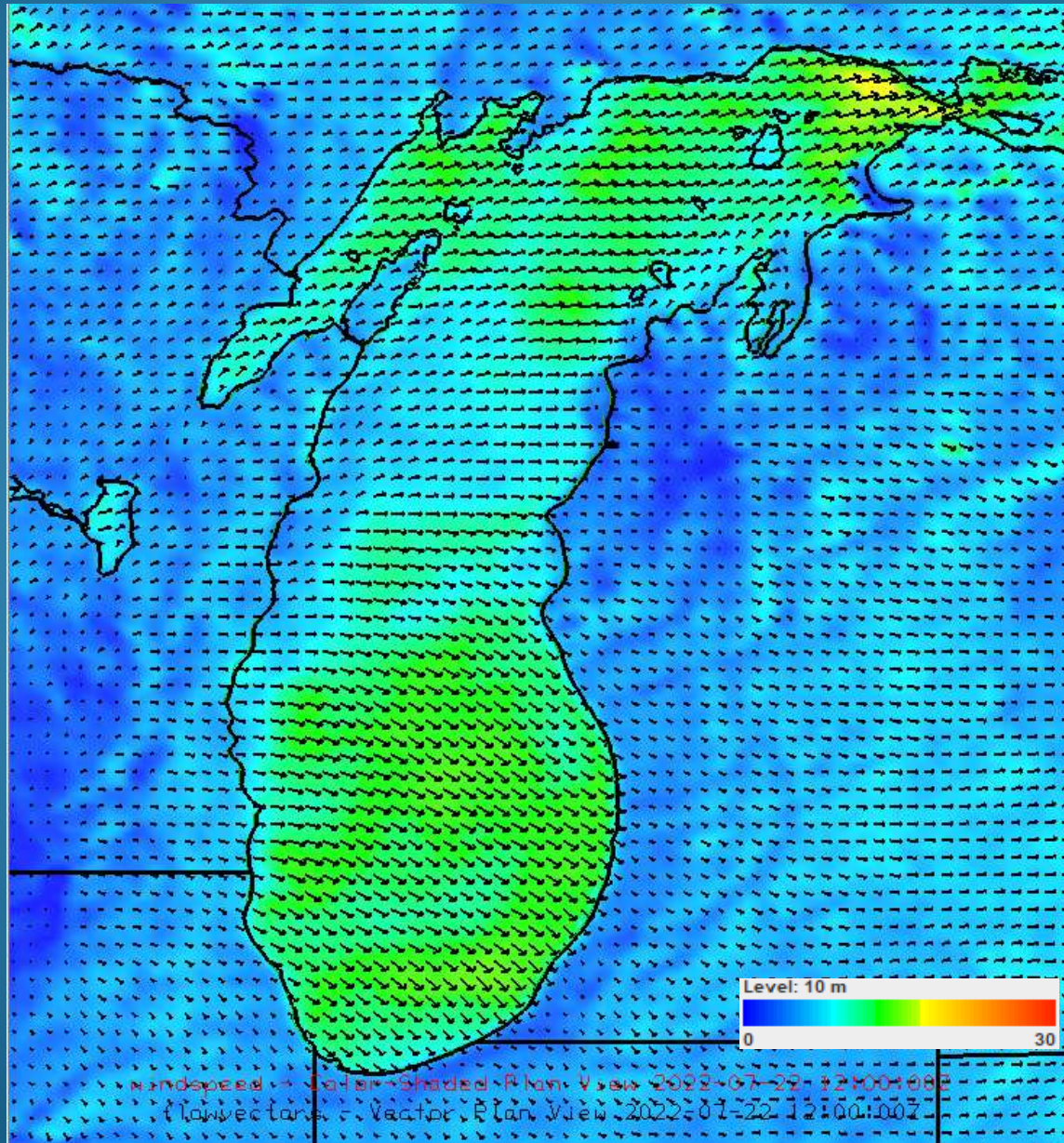




# Radar – Friday AM



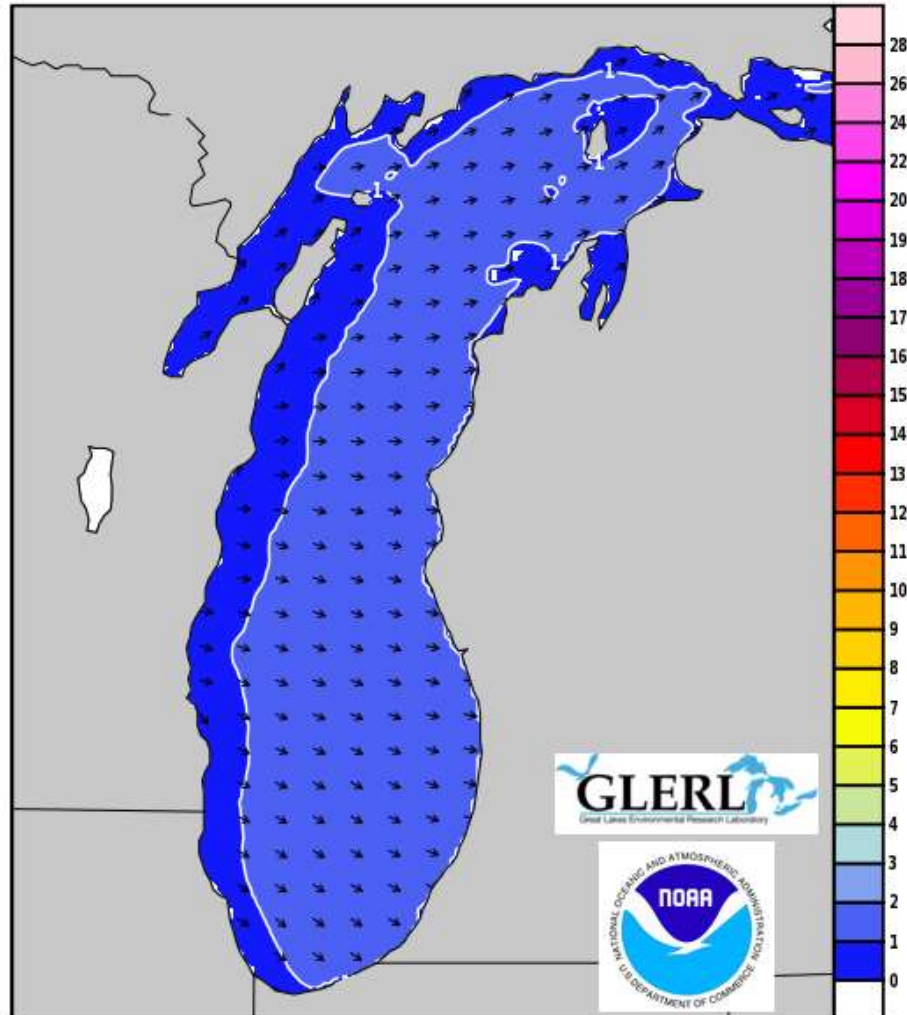
# Lake Wind Field – Friday AM



# Lake Wave Heights – Friday AM

Wave Watch III Sig WaveHeight (ft) & Dir  
Valid Time: 2022-07-22 1200 UTC

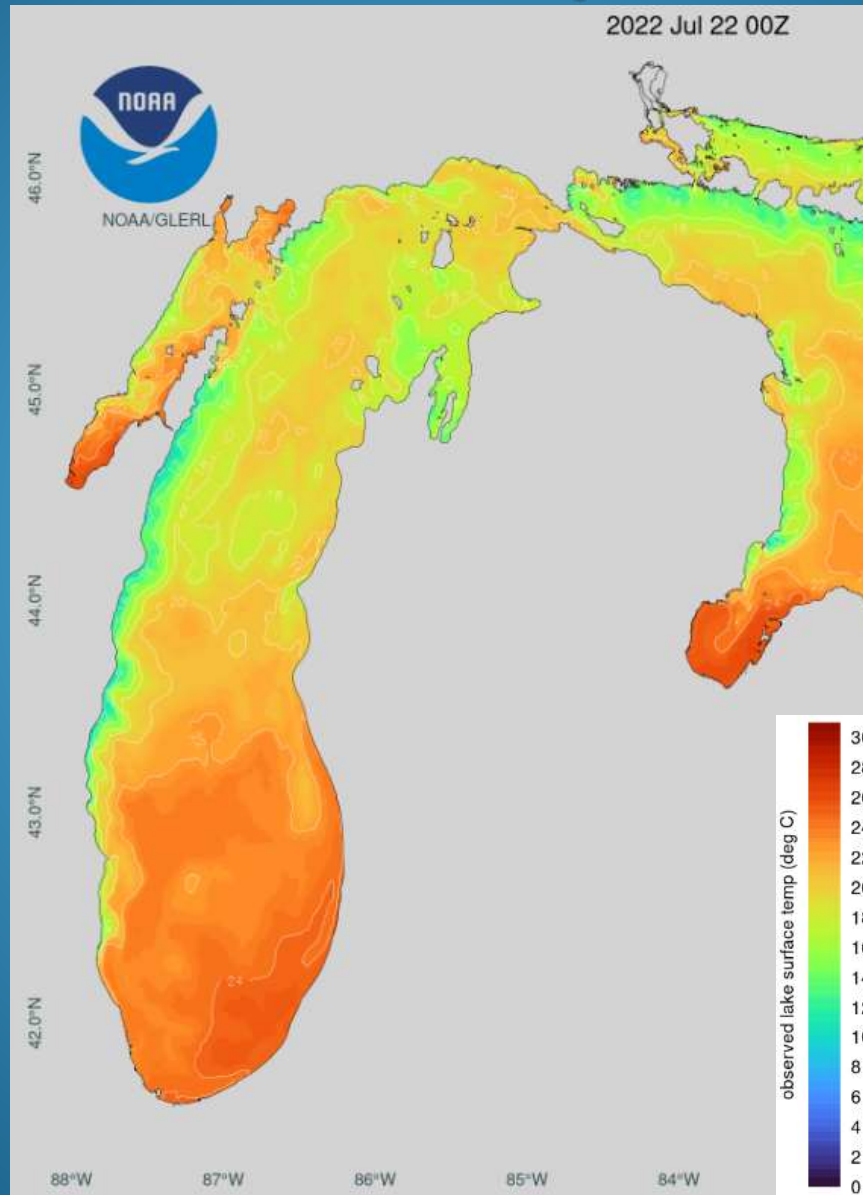
Fri Jul 22 07 AM EST  
Fri Jul 22 06 AM CST



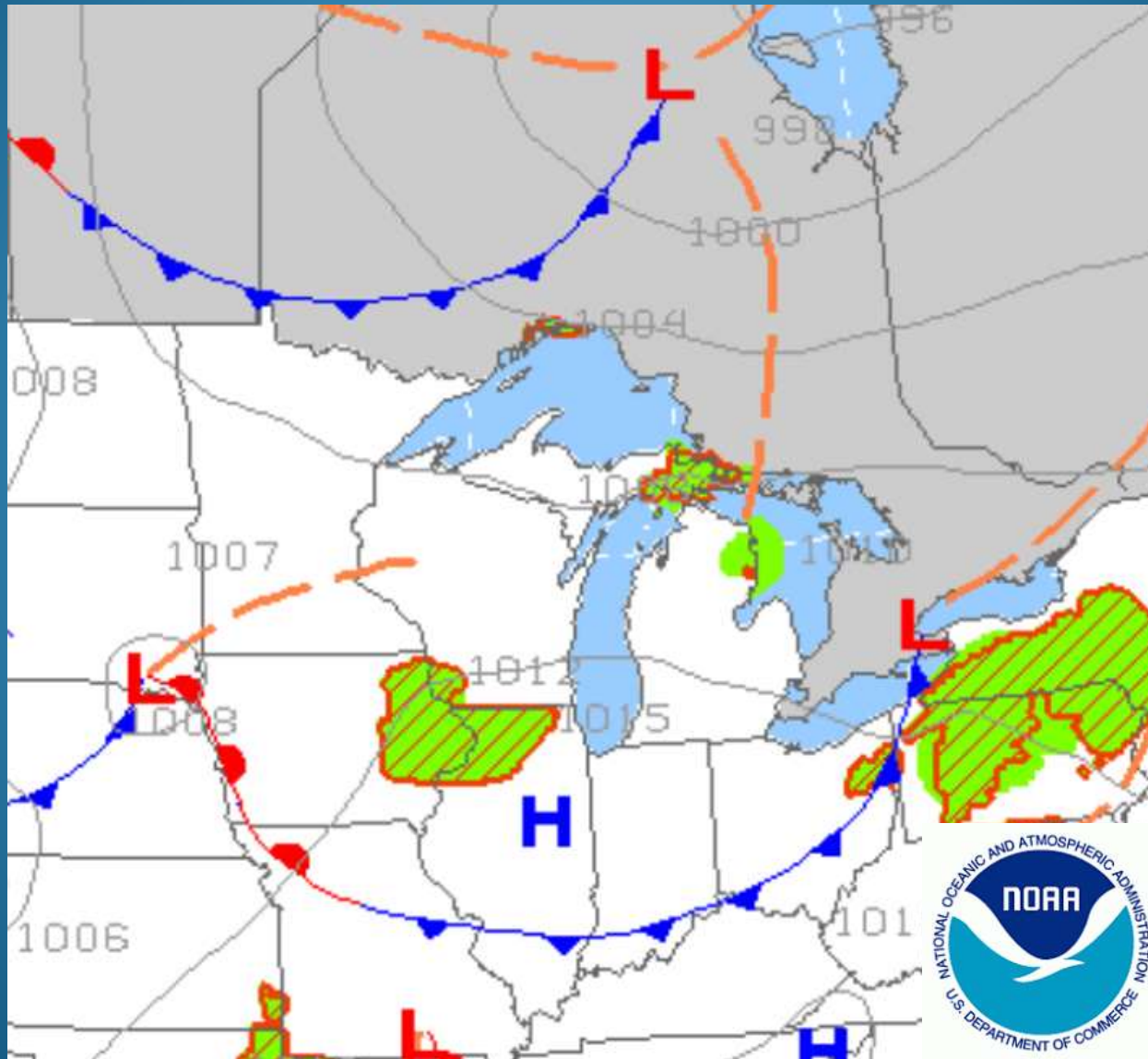
Init Time: 2022-07-22 0700 UTC

Forecast Hour: 5

# Lake Surface Water Temp – Friday AM



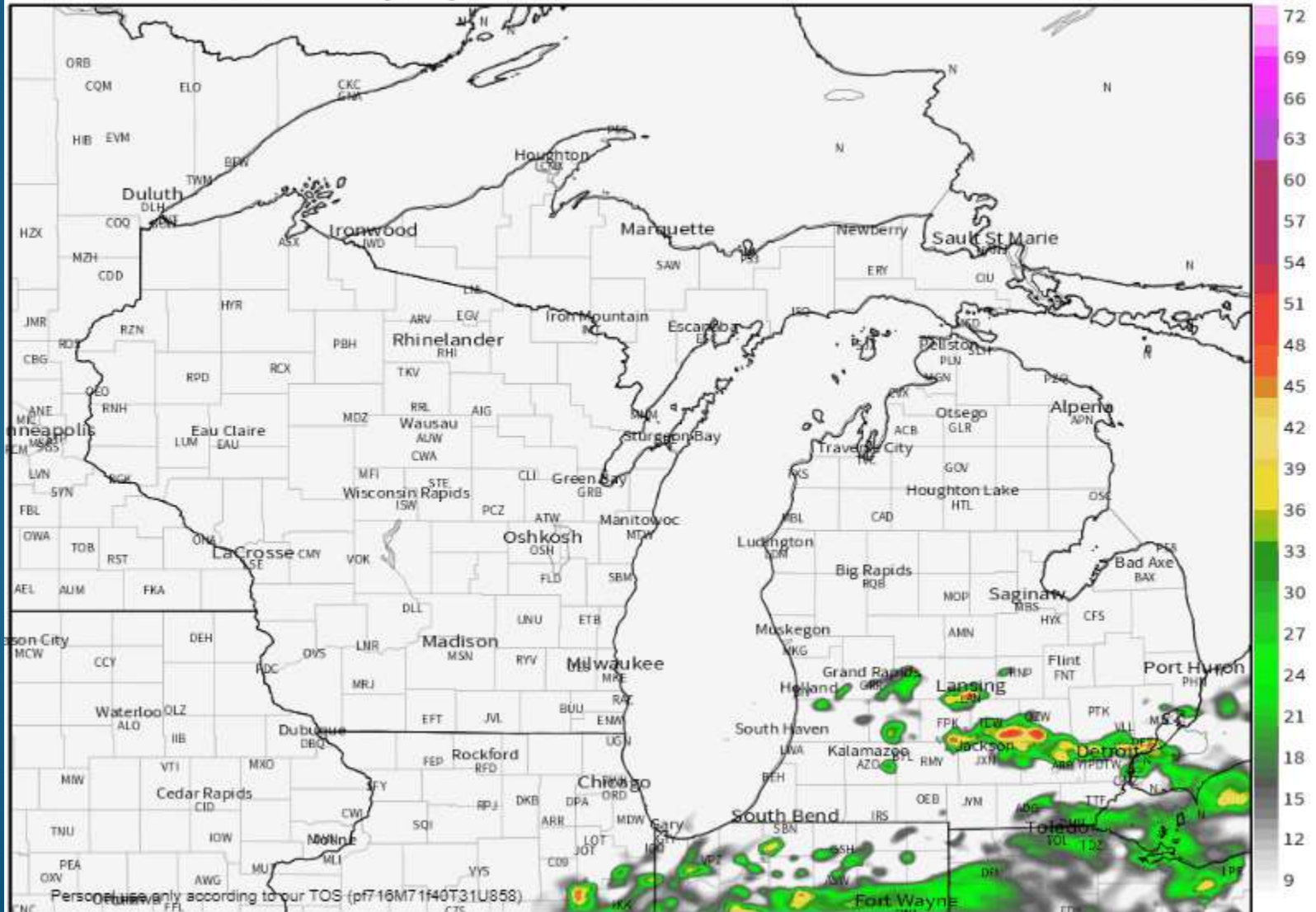
# Surface Weather Map – 1300 FRIDAY



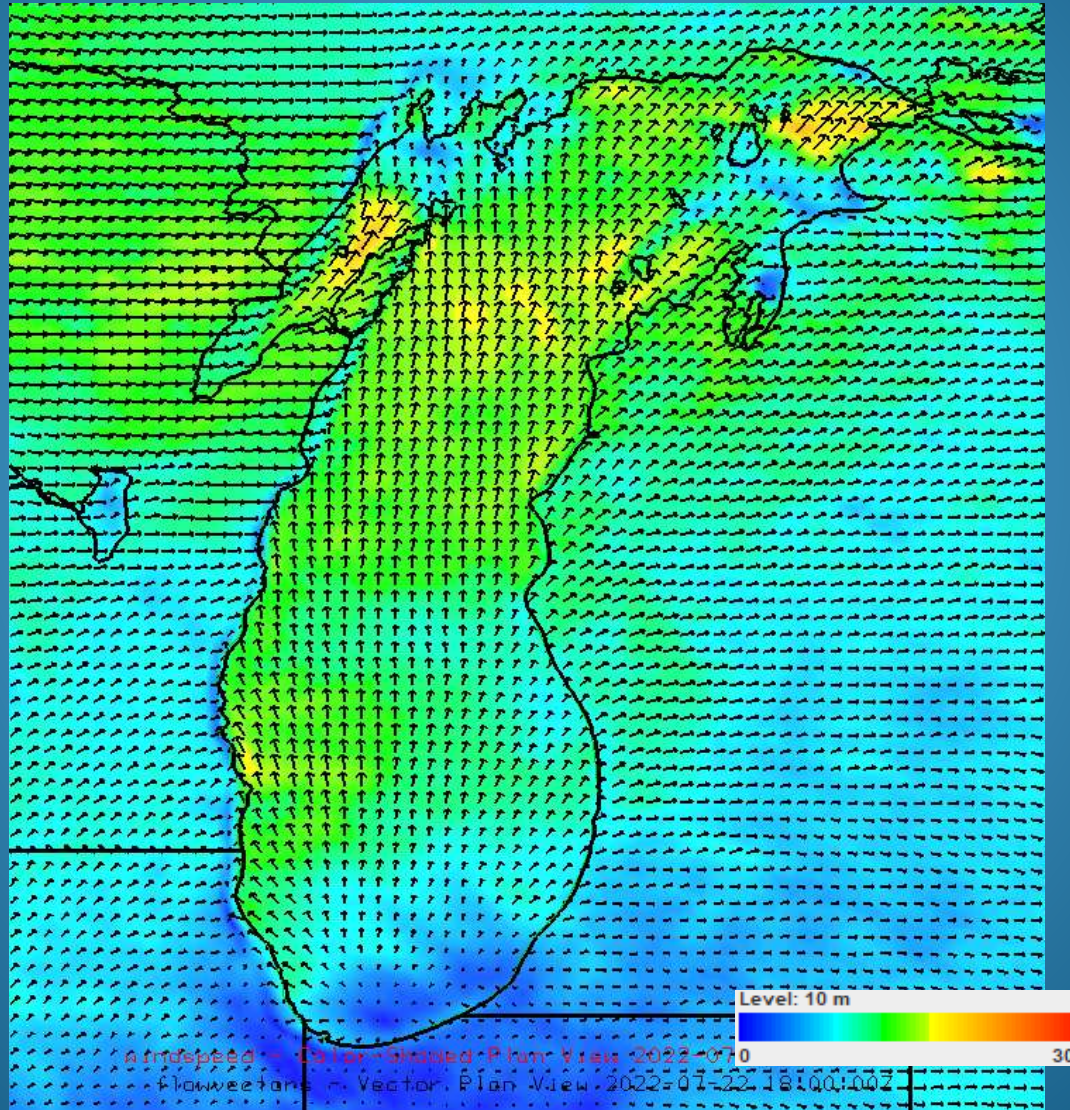
# Forecast Radar (loop)– FRIDAY AM to Saturday AM

**HRRR** Composite Reflectivity [dBZ] | Rain+Snow Type  
Init: 06Z16JUL2021 -- [12.00] hr --> Valid Fri 18Z16JUL2021

weathermodels.com  
Fri 14:00 EDT 16JUL2021



# Surface Wind Forecast – 1300 FRIDAY

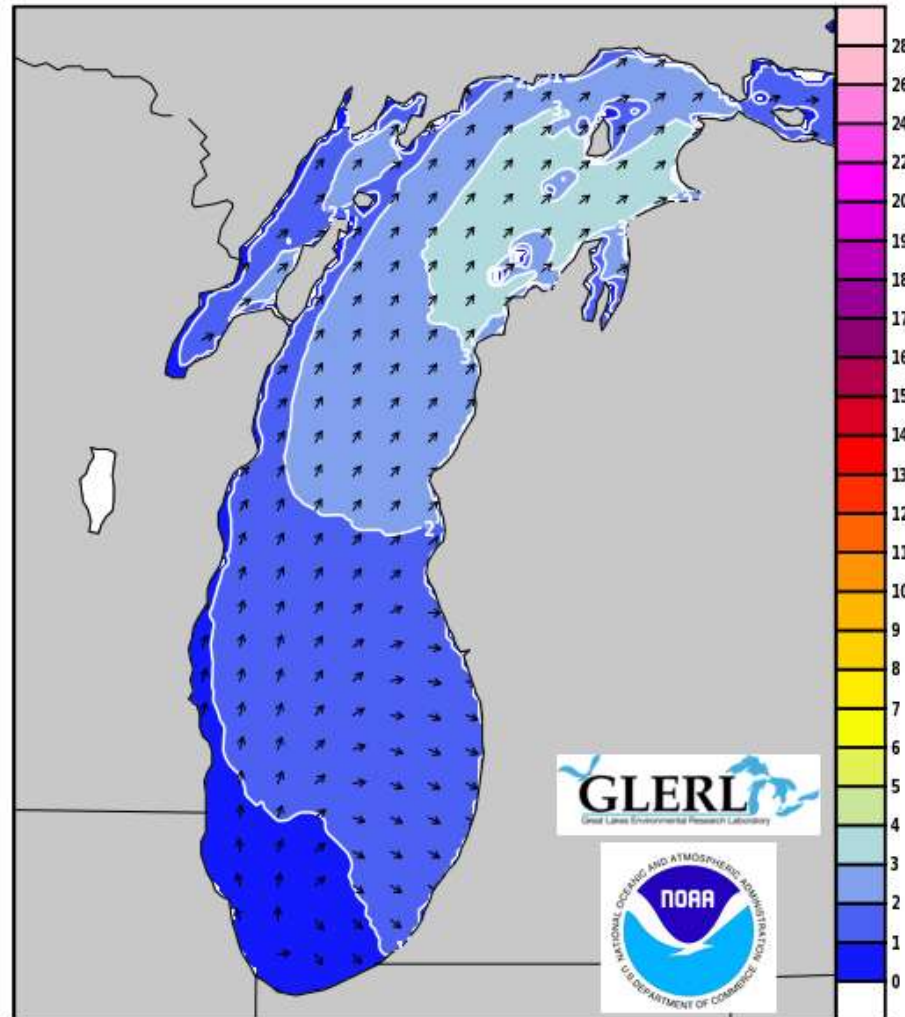


HRRR

# Wave Forecast – 1300 FRIDAY

Wave Watch III Sig WaveHeight (ft) & Dir  
Valid Time: 2022-07-22 1900 UTC

Fri Jul 22 02 PM EST  
Fri Jul 22 01 PM CST

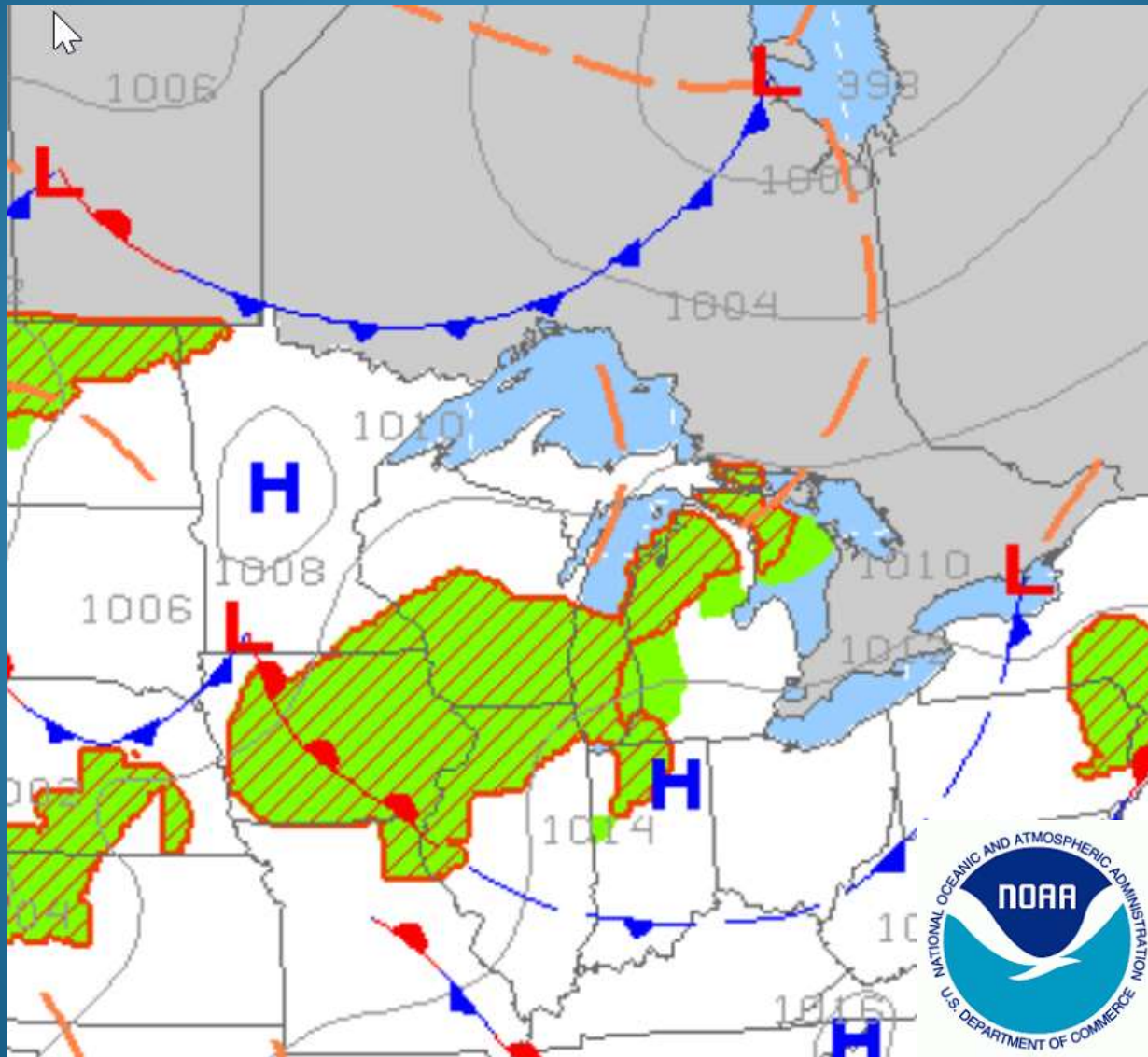


Init Time: 2022-07-22 0700 UTC

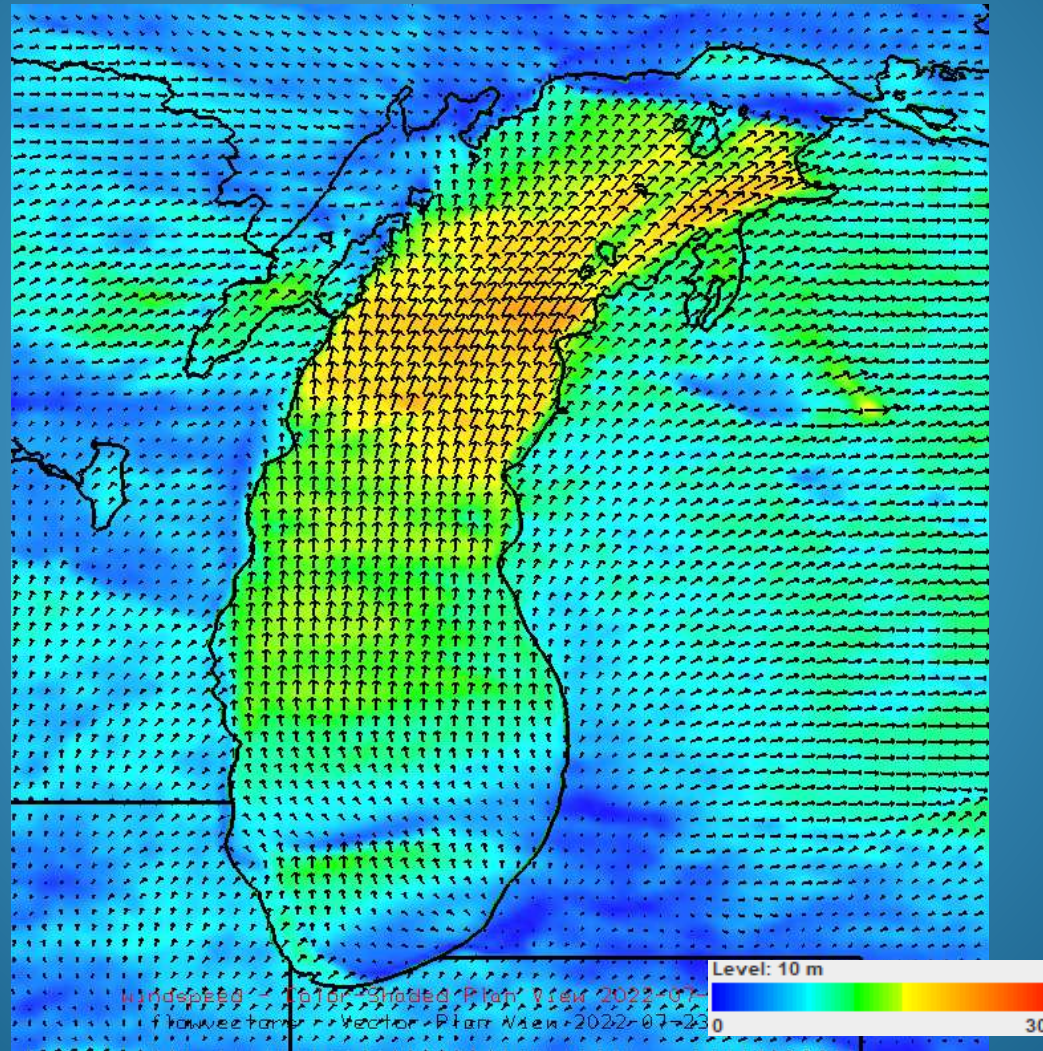
Forecast Hour: 12



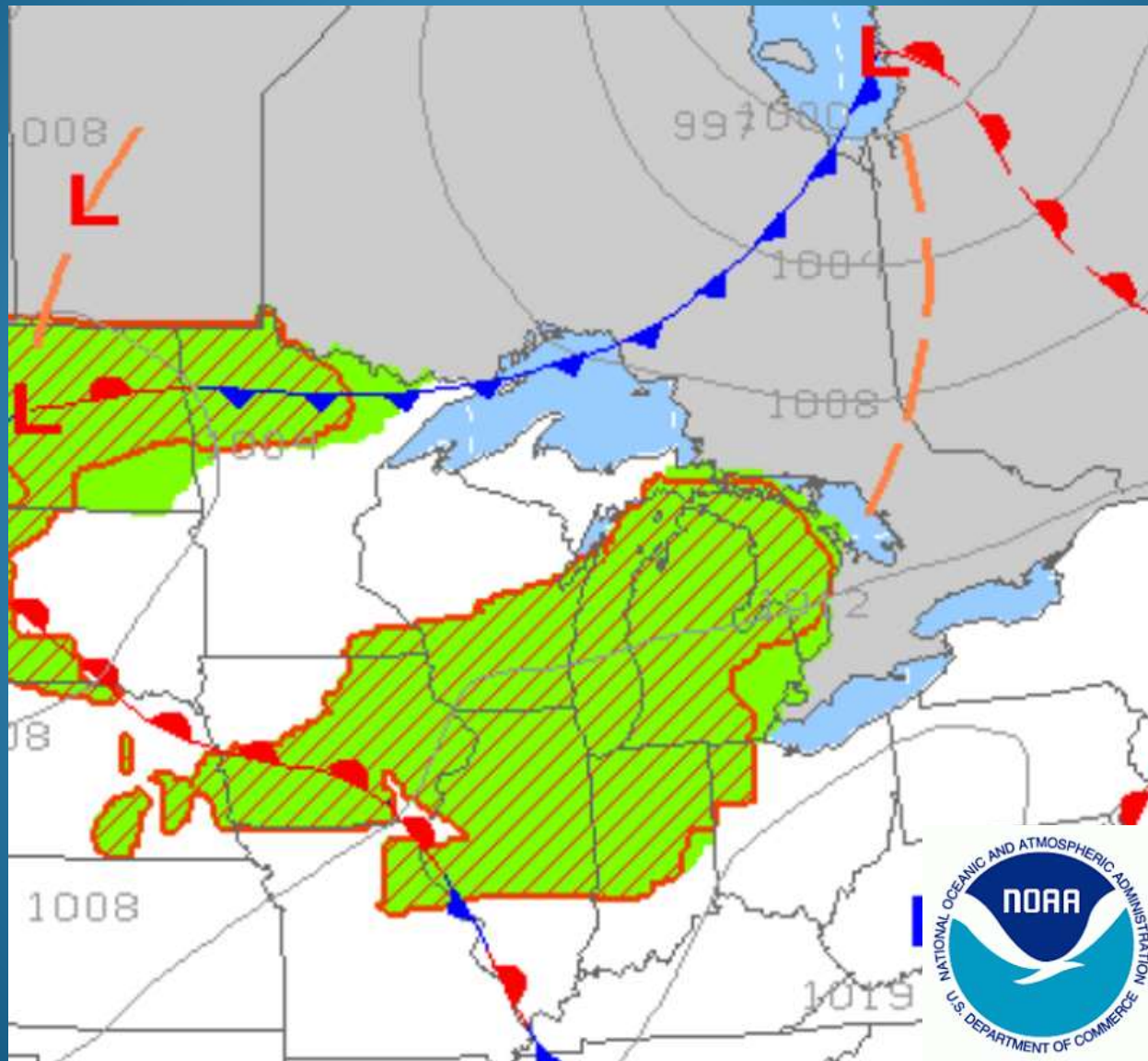
# Surface Weather Map – 1900 FRIDAY



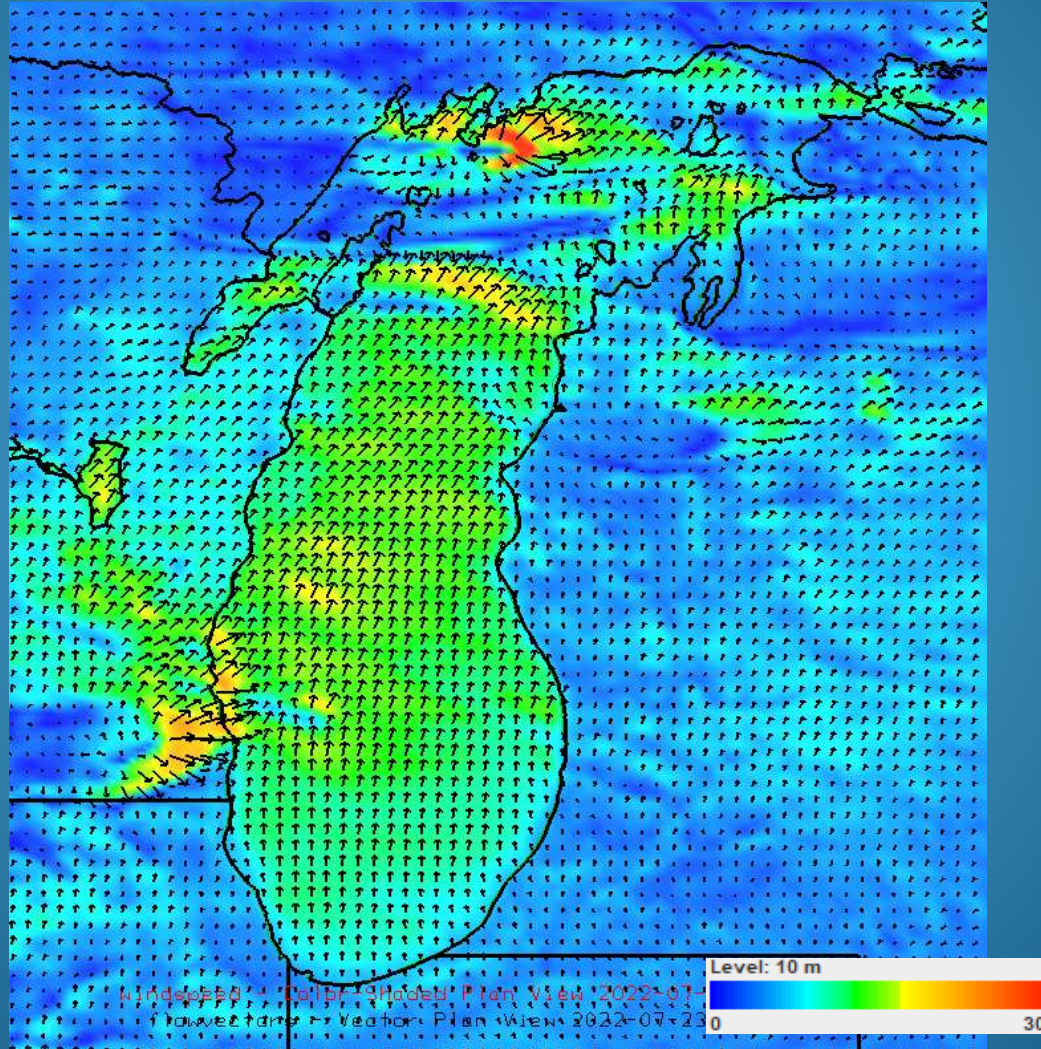
# Surface Wind Forecast – 1900 FRIDAY



# Surface Weather Map – 0100 SATURDAY

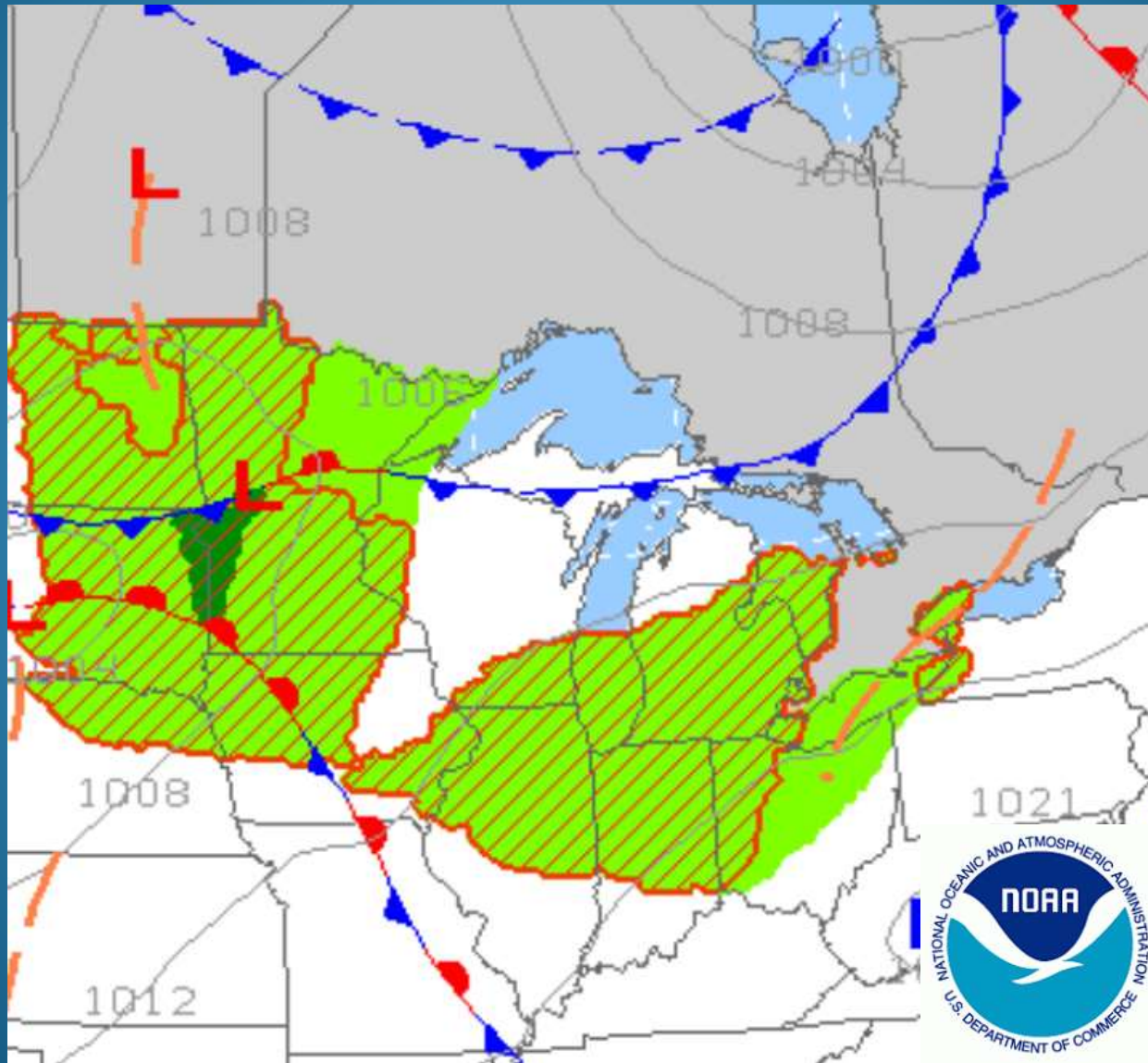


# Surface Wind Forecast – 0100 SATURDAY

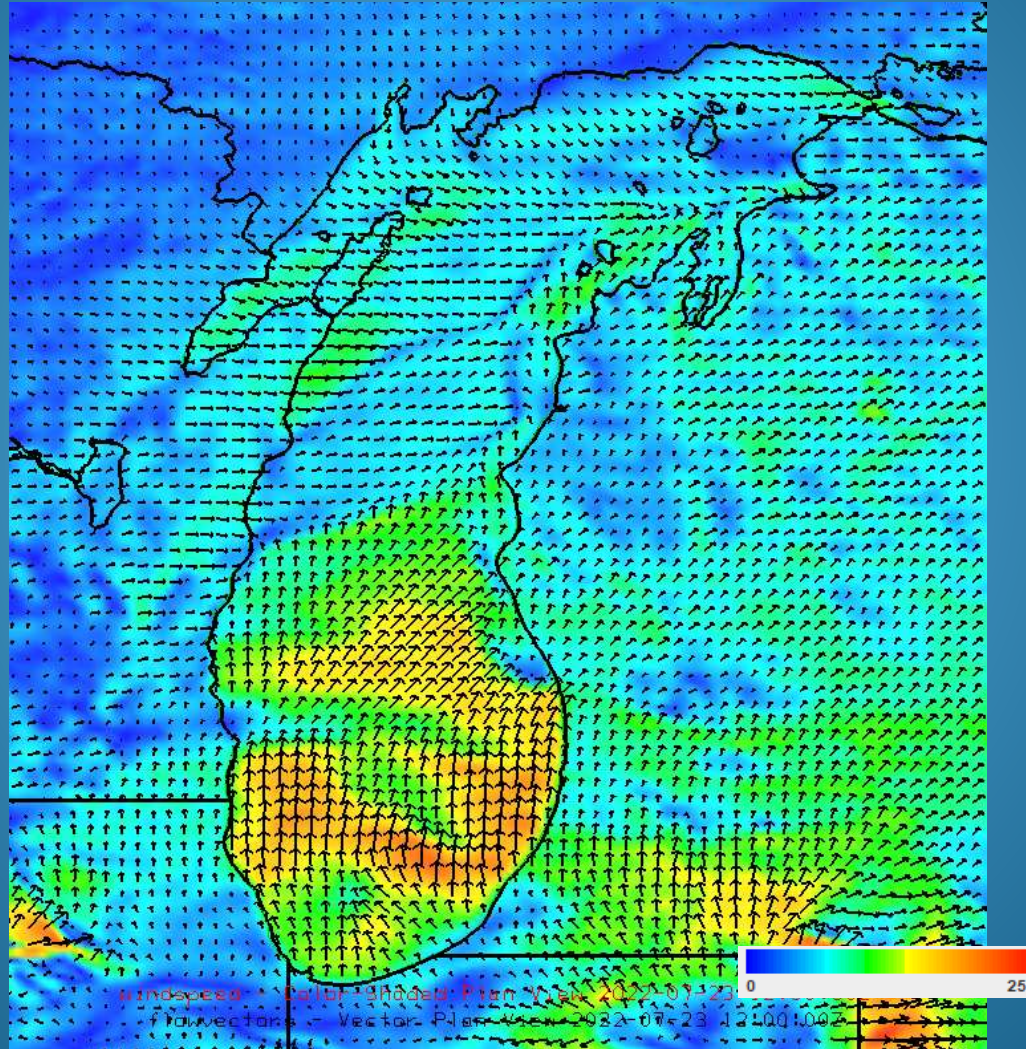


HRRR

# Surface Weather Map – 0700 SATURDAY



# Surface Wind Forecast – 0700 SATURDAY

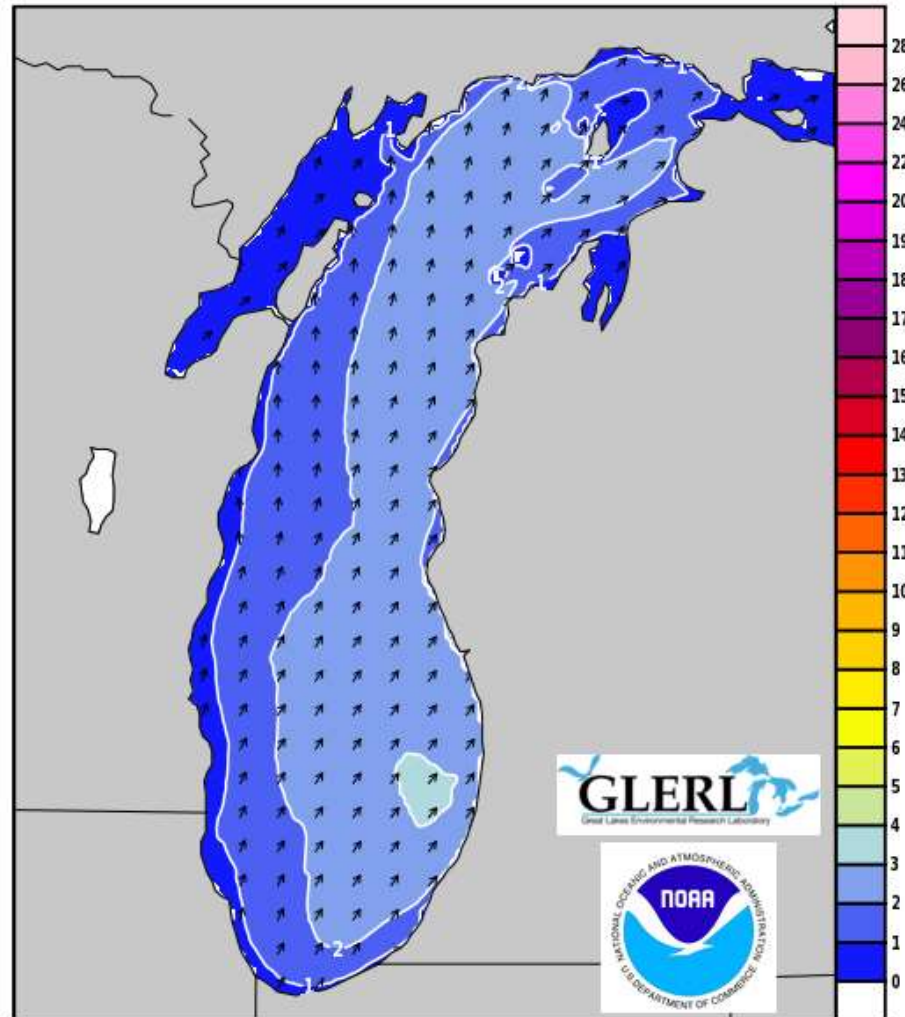


HRRR

# Wave Forecast – 0700 SATURDAY

Wave Watch III Sig WaveHeight (ft) & Dir  
Valid Time: 2022-07-23 1200 UTC

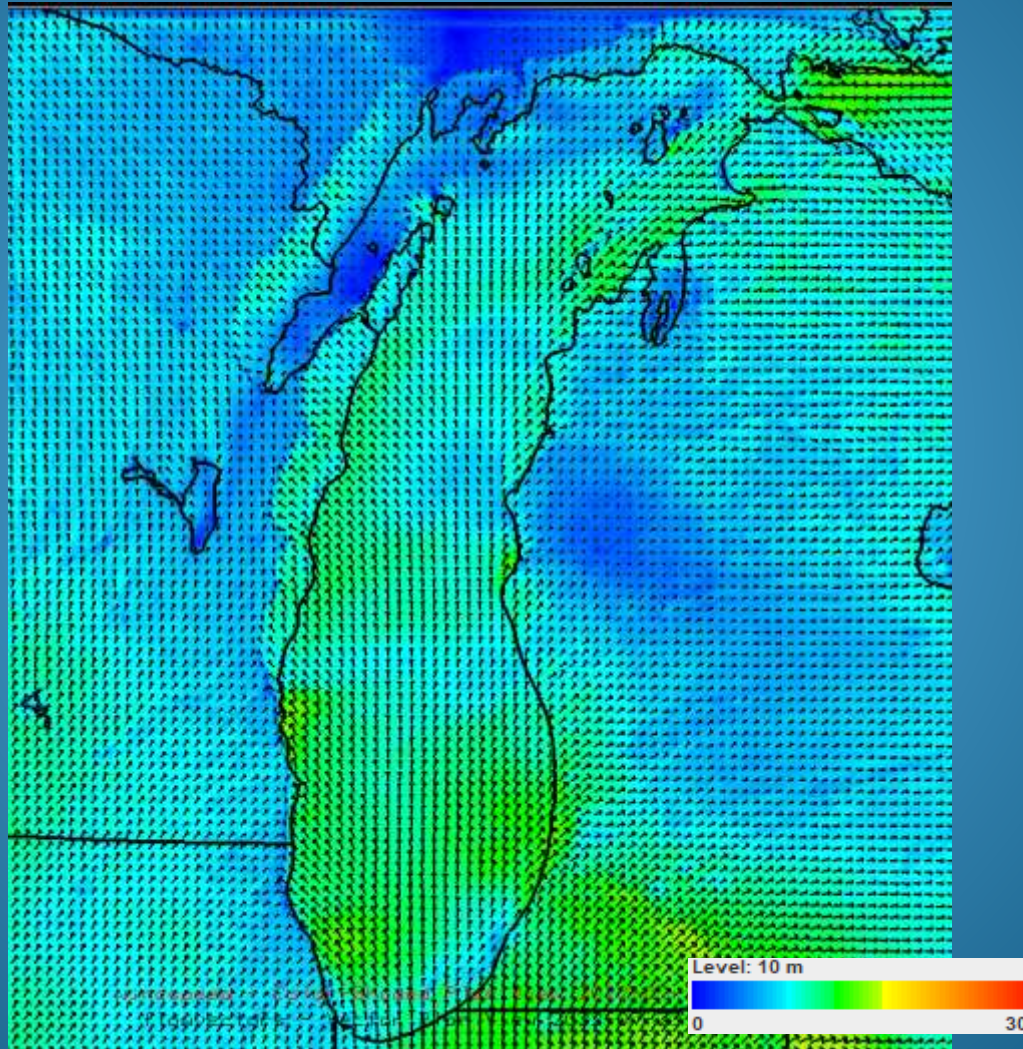
Sat Jul 23 07 AM EST  
Sat Jul 23 06 AM CST



Init Time: 2022-07-22 0700 UTC

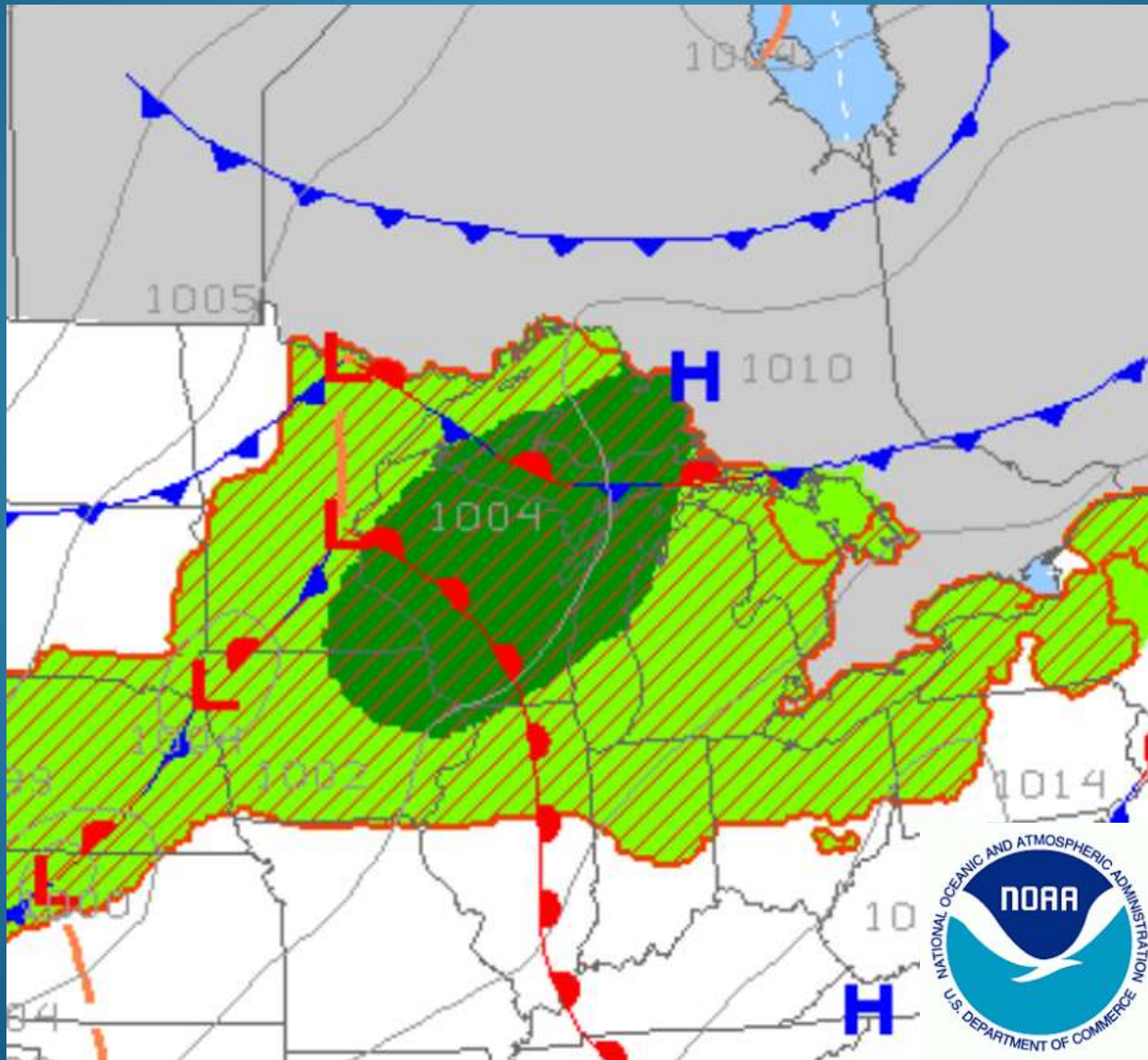
Forecast Hour: 29

# Surface Wind Forecast – 1300 SATURDAY



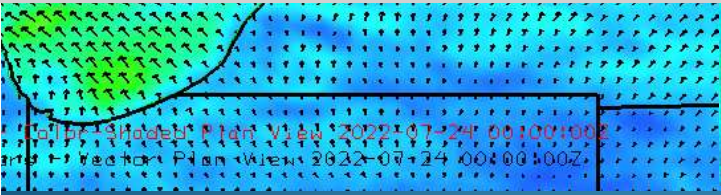
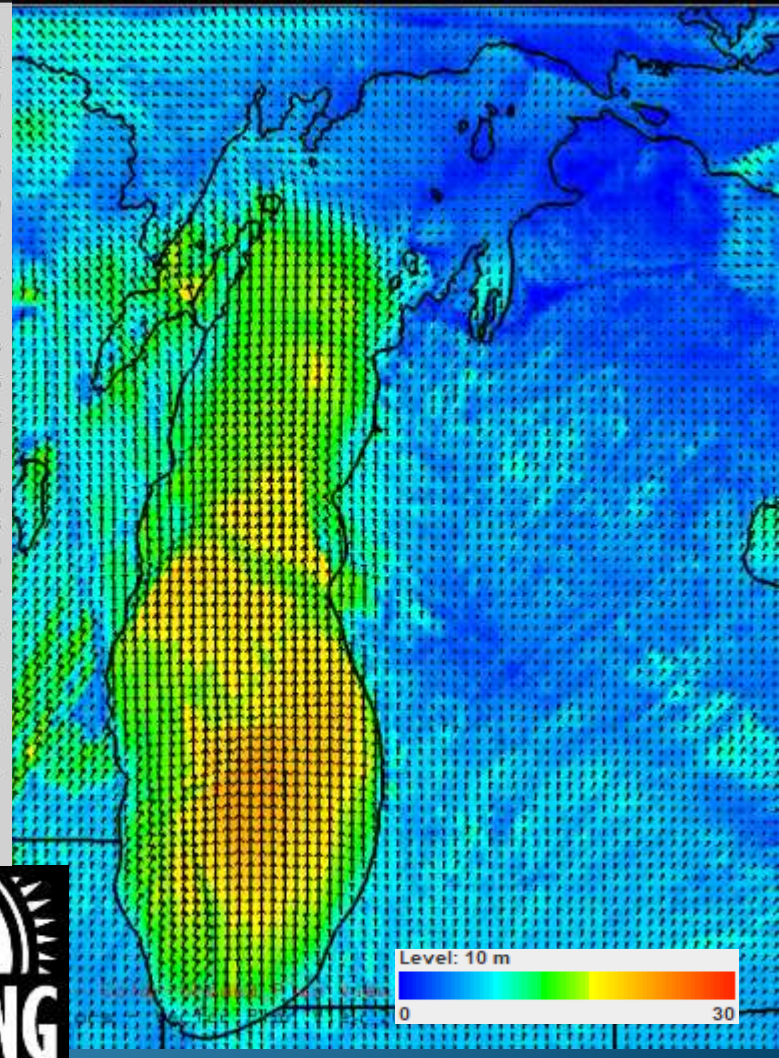
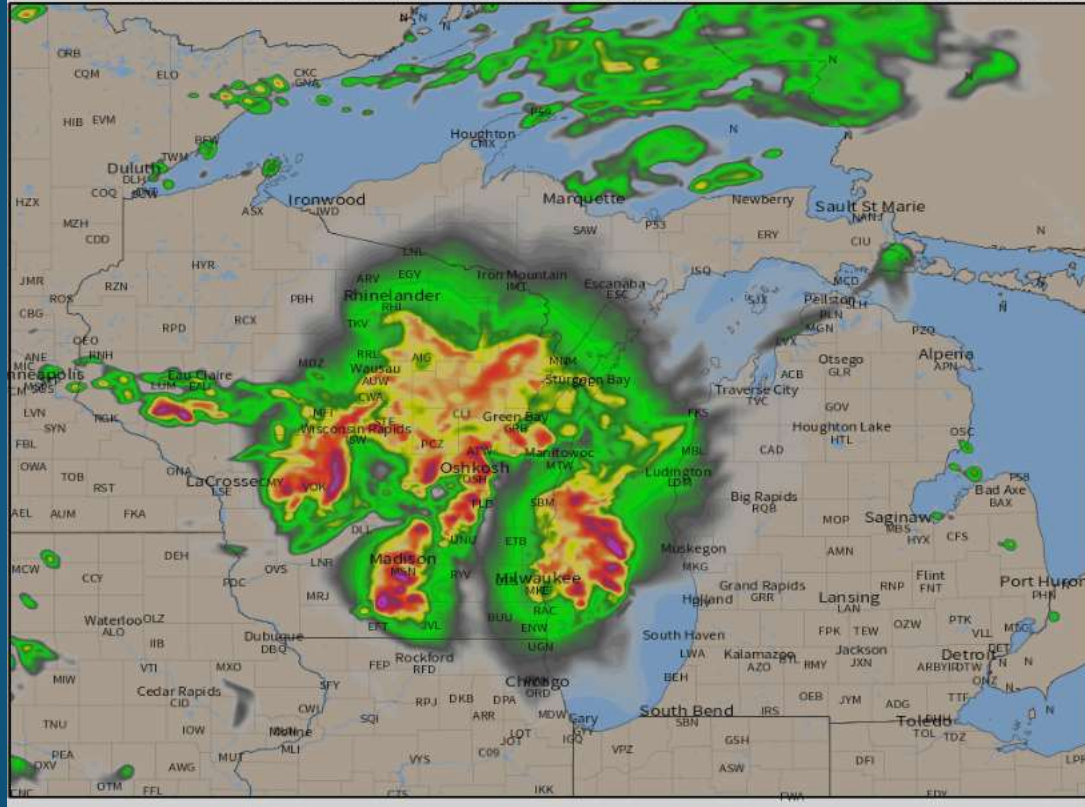


# Surface Weather Map – 1900 SATURDAY



# Surface Wind Forecast – 1900 SATURDAY

HRRR Composite Reflectivity [dBZ] | Rain+Snow Type  
Init: 06Z22JUL2022 -- [42.00] hr --> Valid Sun 00Z24JUL2022  
weathermodels.com  
Sat 20:00 EDT 23JUL2022



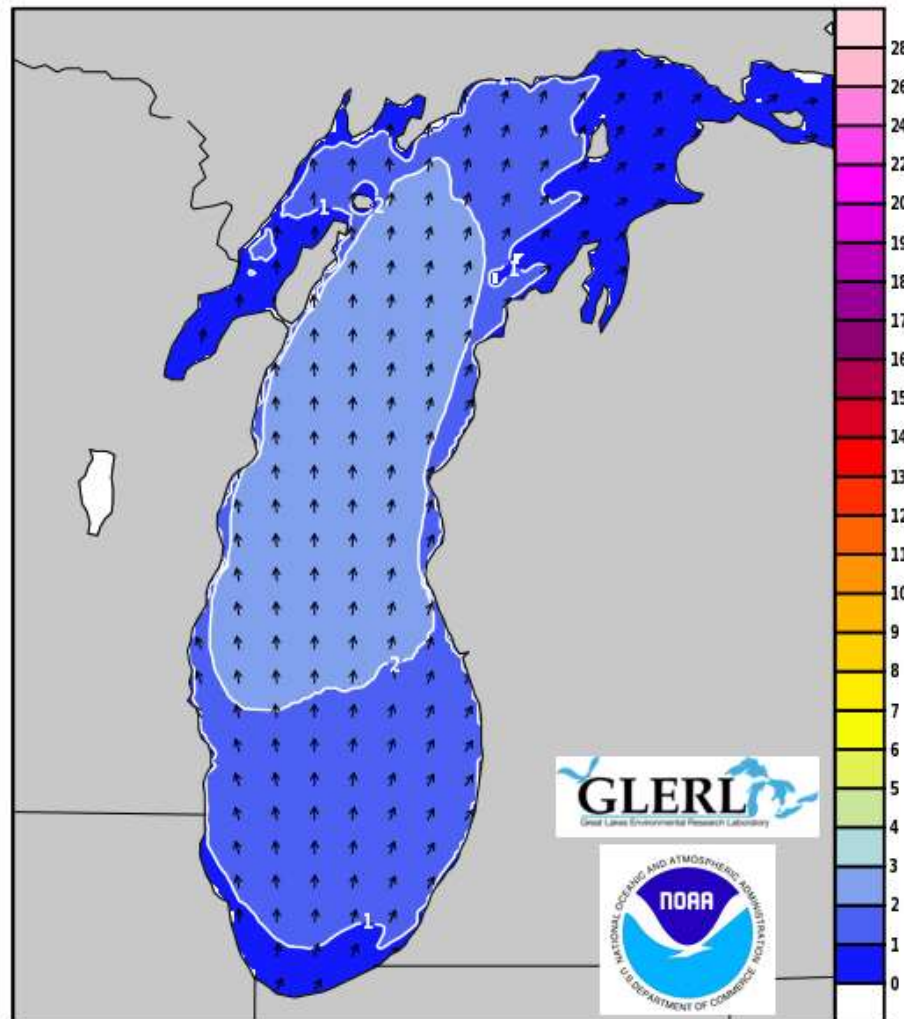
HRRR

SWS-WRF

# Wave Forecast – 1900 SATURDAY

Wave Watch III Sig WaveHeight (ft) & Dir  
Valid Time: 2022-07-24 0000 UTC

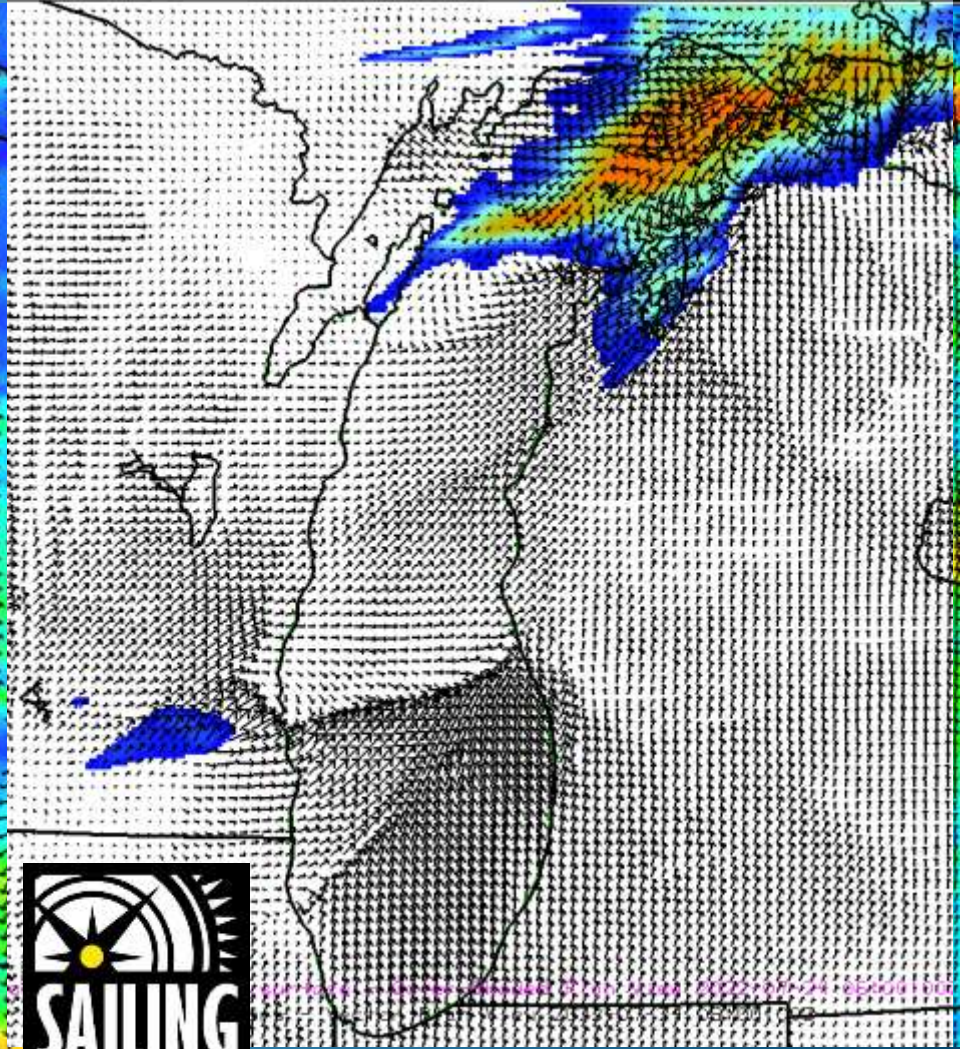
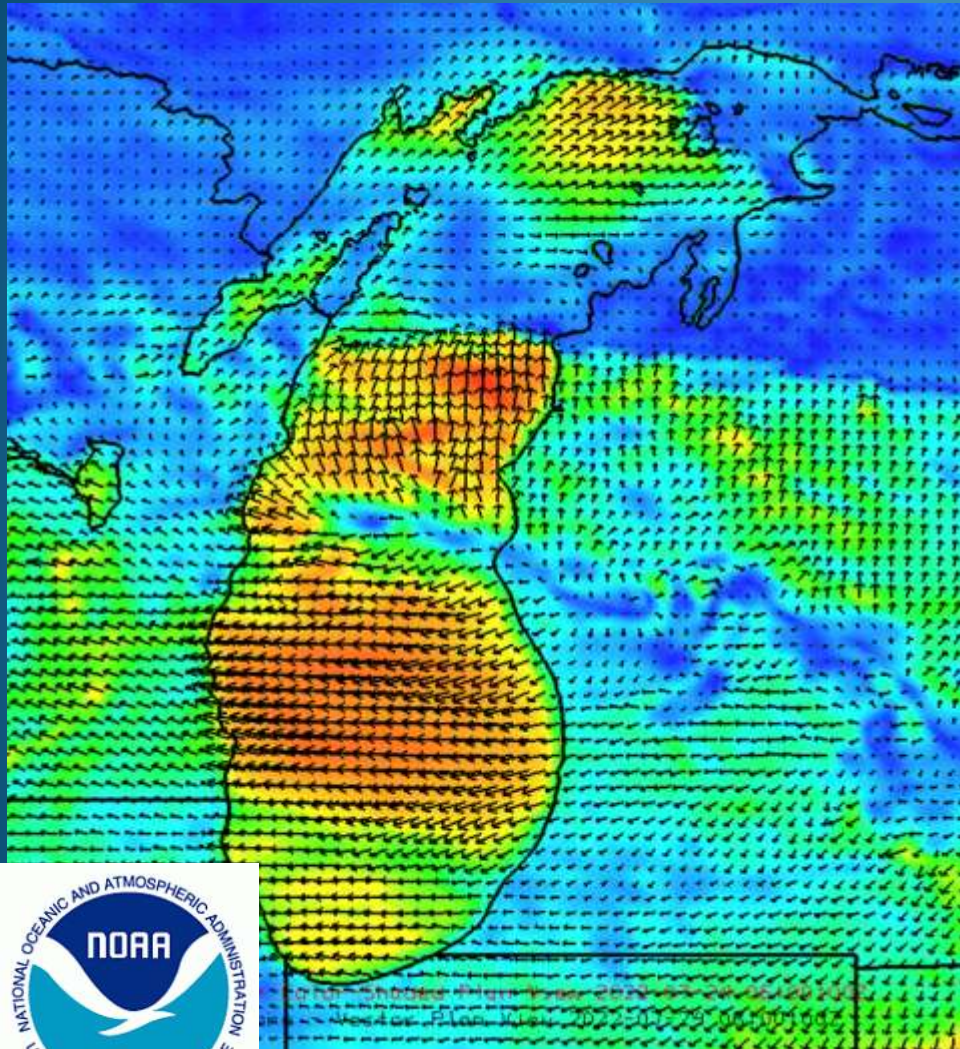
Sat Jul 23 07 PM EST  
Sat Jul 23 06 PM CST



Init Time: 2022-07-22 0700 UTC

Forecast Hour: 41

# Surface Wind Forecast – 0100 SATURDAY

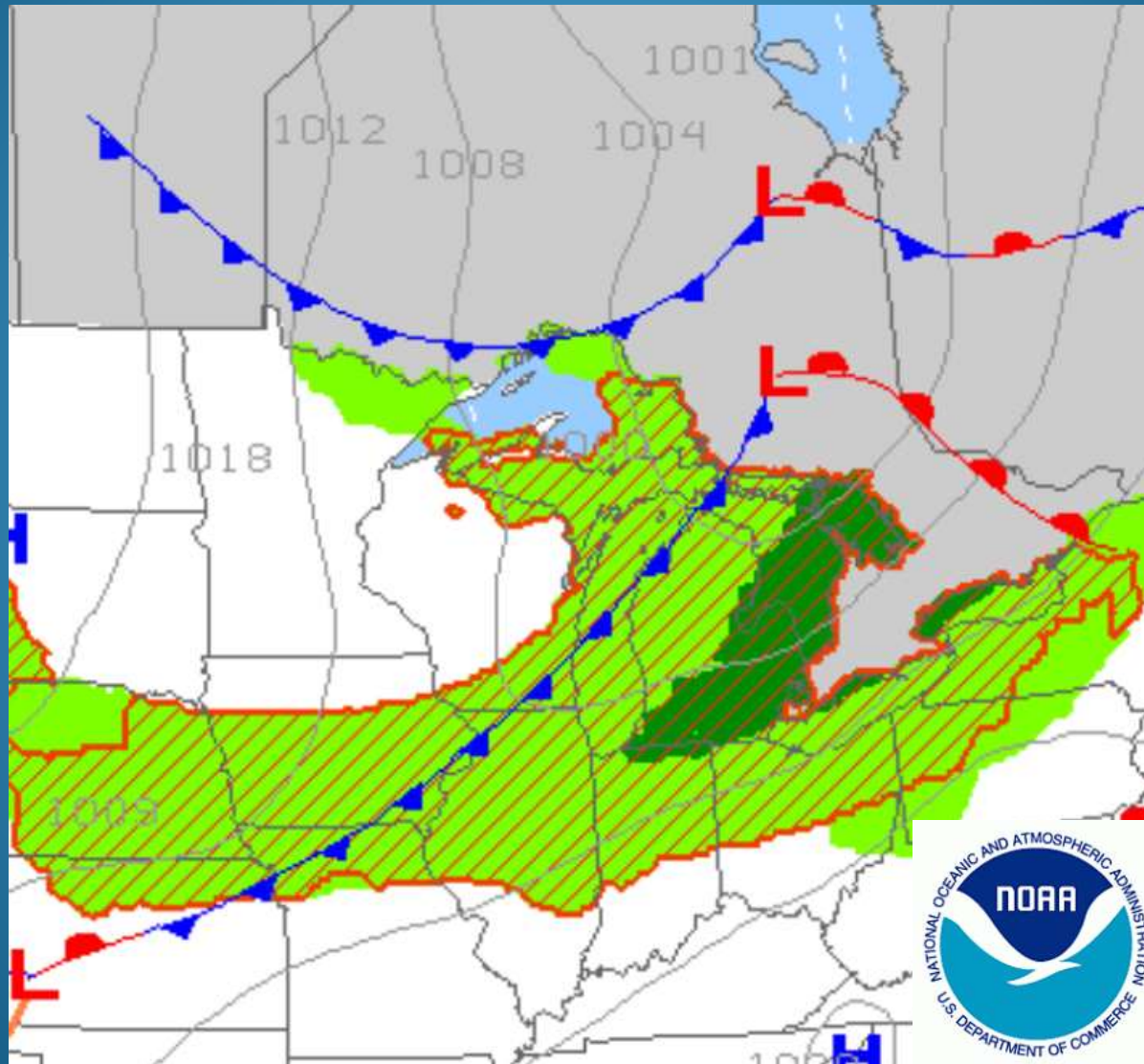


HRRR

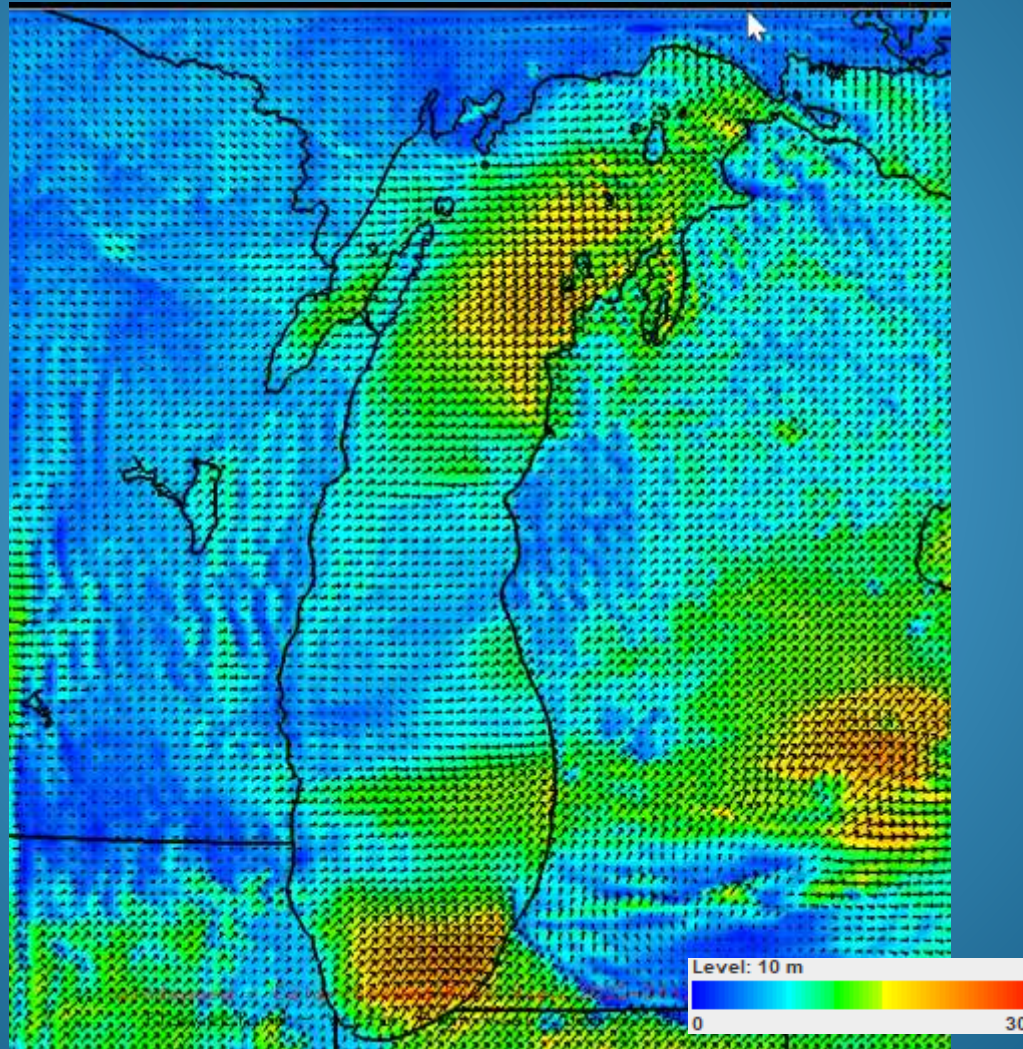


SWS-WRF

# Surface Weather Map – 0700 SUNDAY



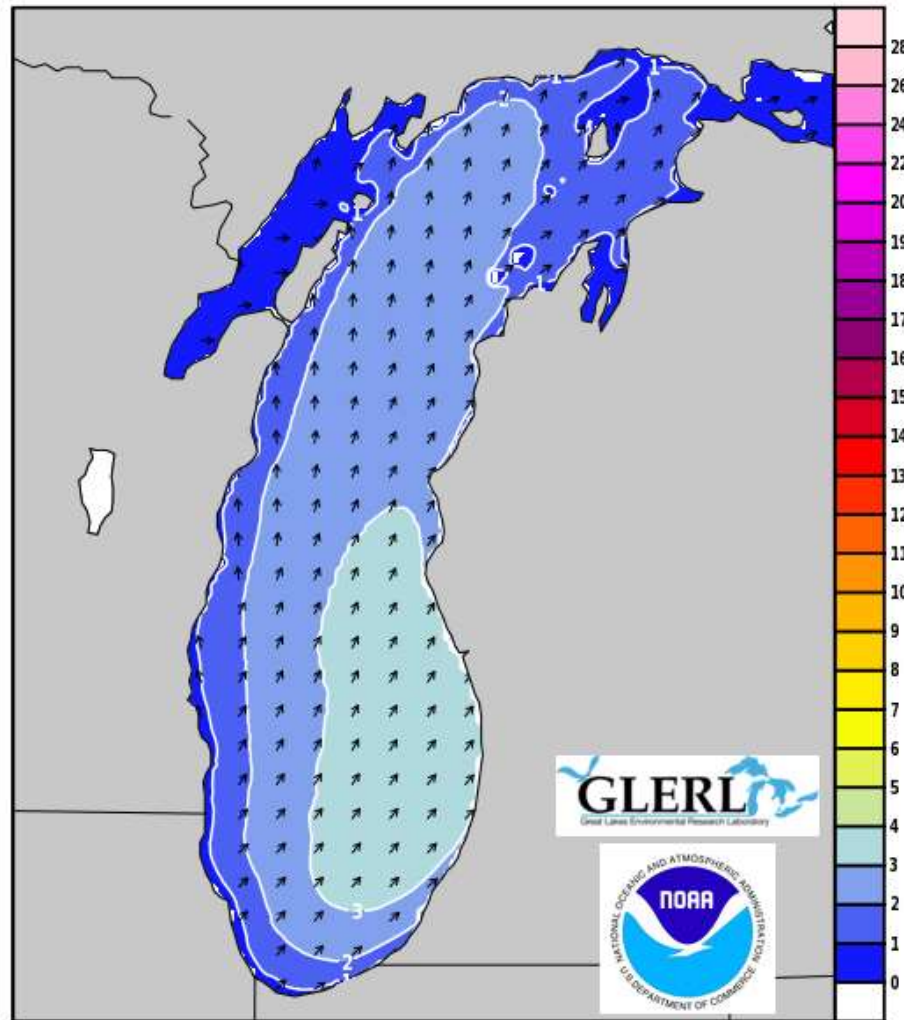
# Surface Wind Forecast – 0700 SUNDAY



# Wave Forecast – 0700 SUNDAY

Wave Watch III Sig WaveHeight (ft) & Dir  
Valid Time: 2022-07-24 1200 UTC

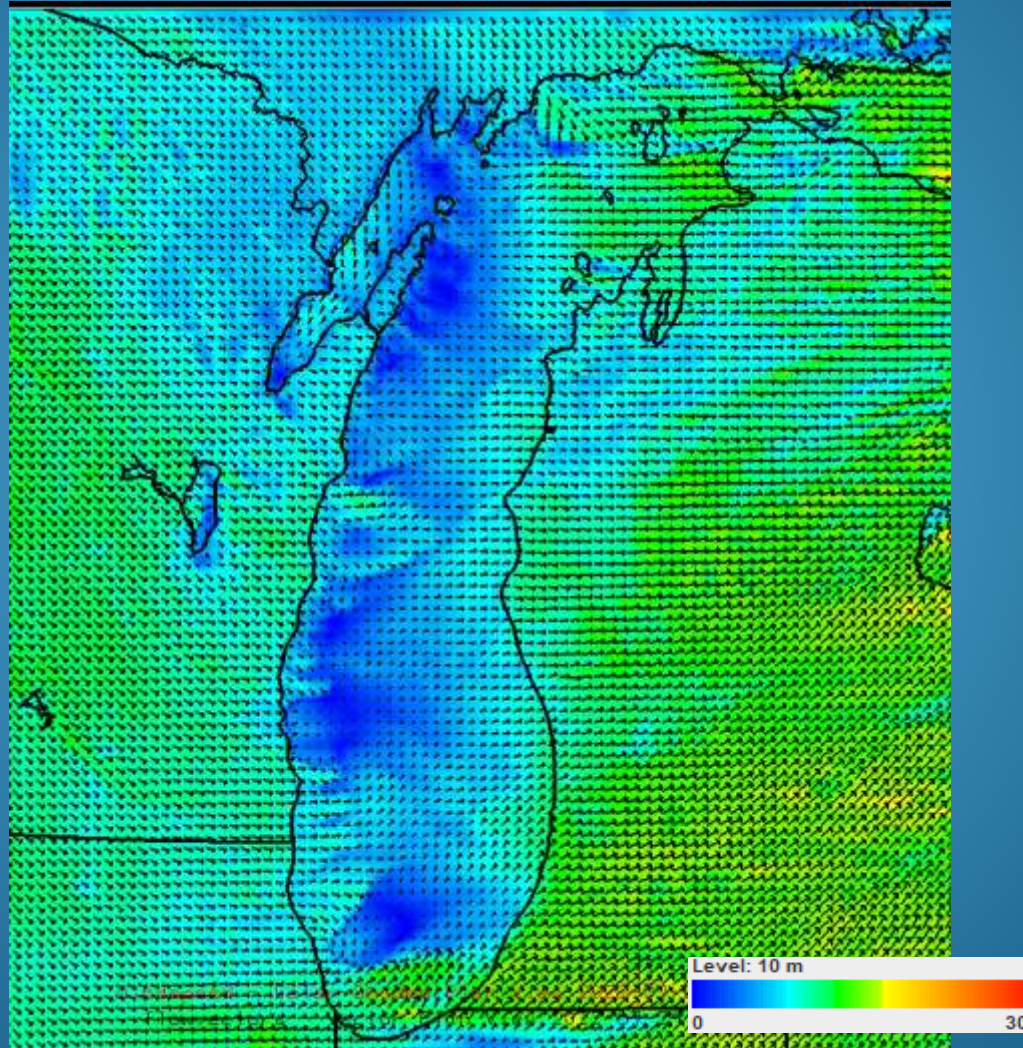
Sun Jul 24 07 AM EST  
Sun Jul 24 06 AM CST



Init Time: 2022-07-22 0700 UTC

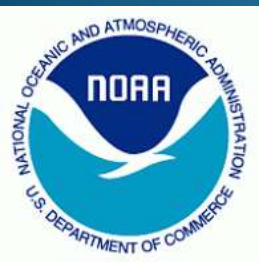
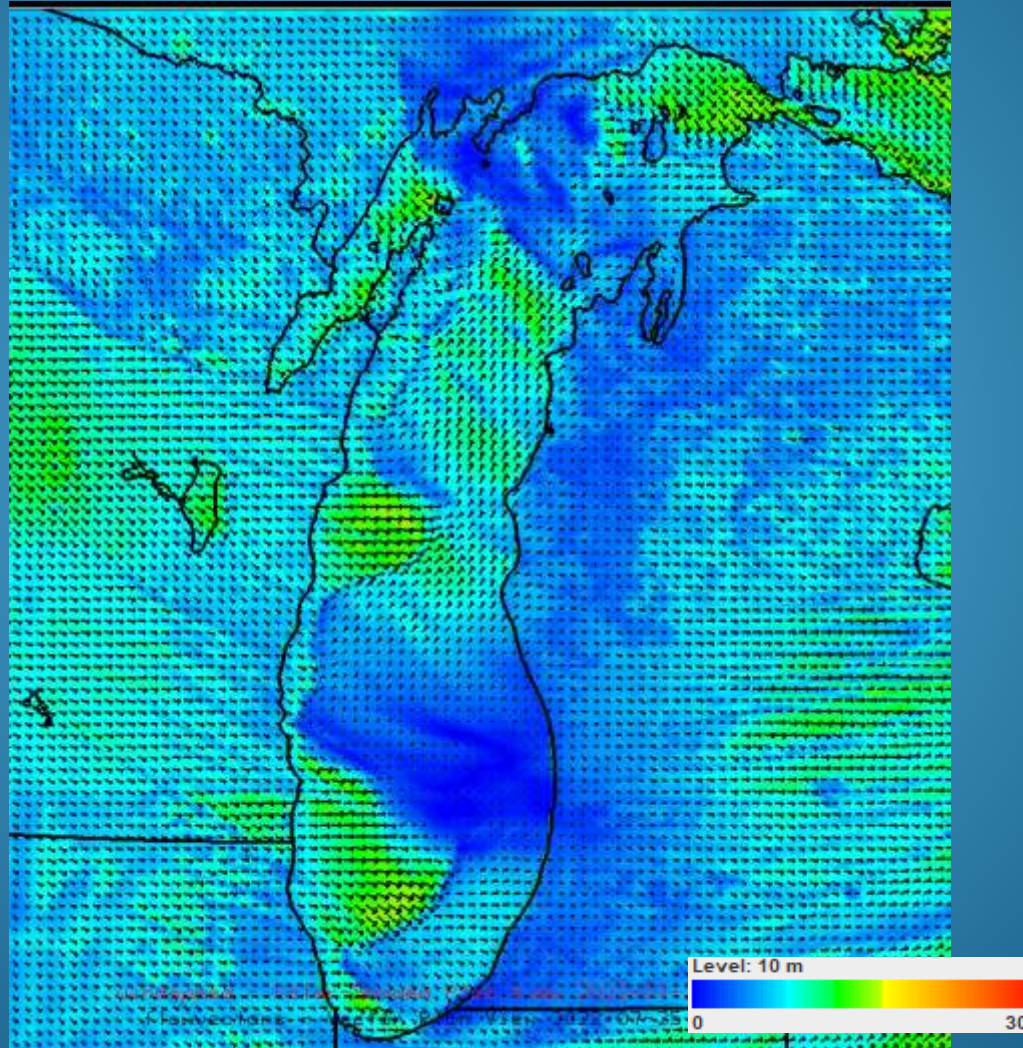
Forecast Hour: 53

# Surface Wind Forecast – 1300 SUNDAY





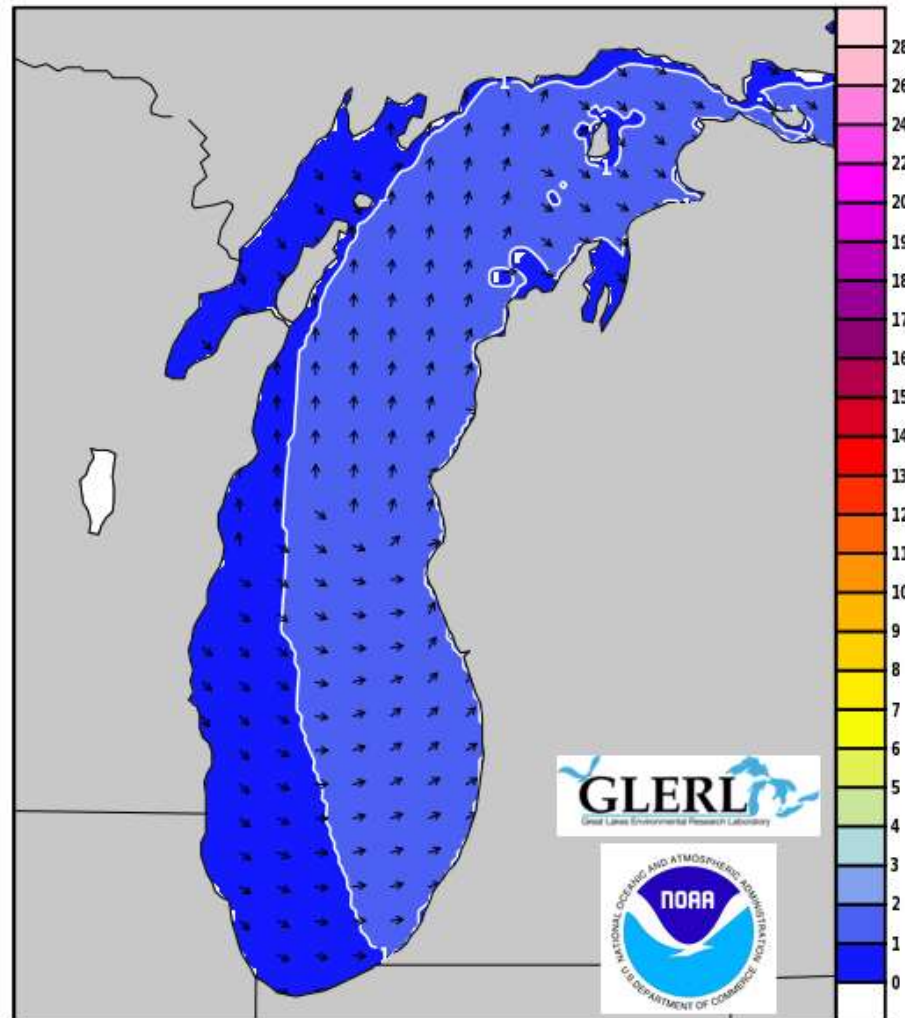
# Surface Wind Forecast – 1900 SUNDAY



# Wave Forecast – 1900 SUNDAY

Wave Watch III Sig WaveHeight (ft) & Dir  
Valid Time: 2022-07-25 0000 UTC

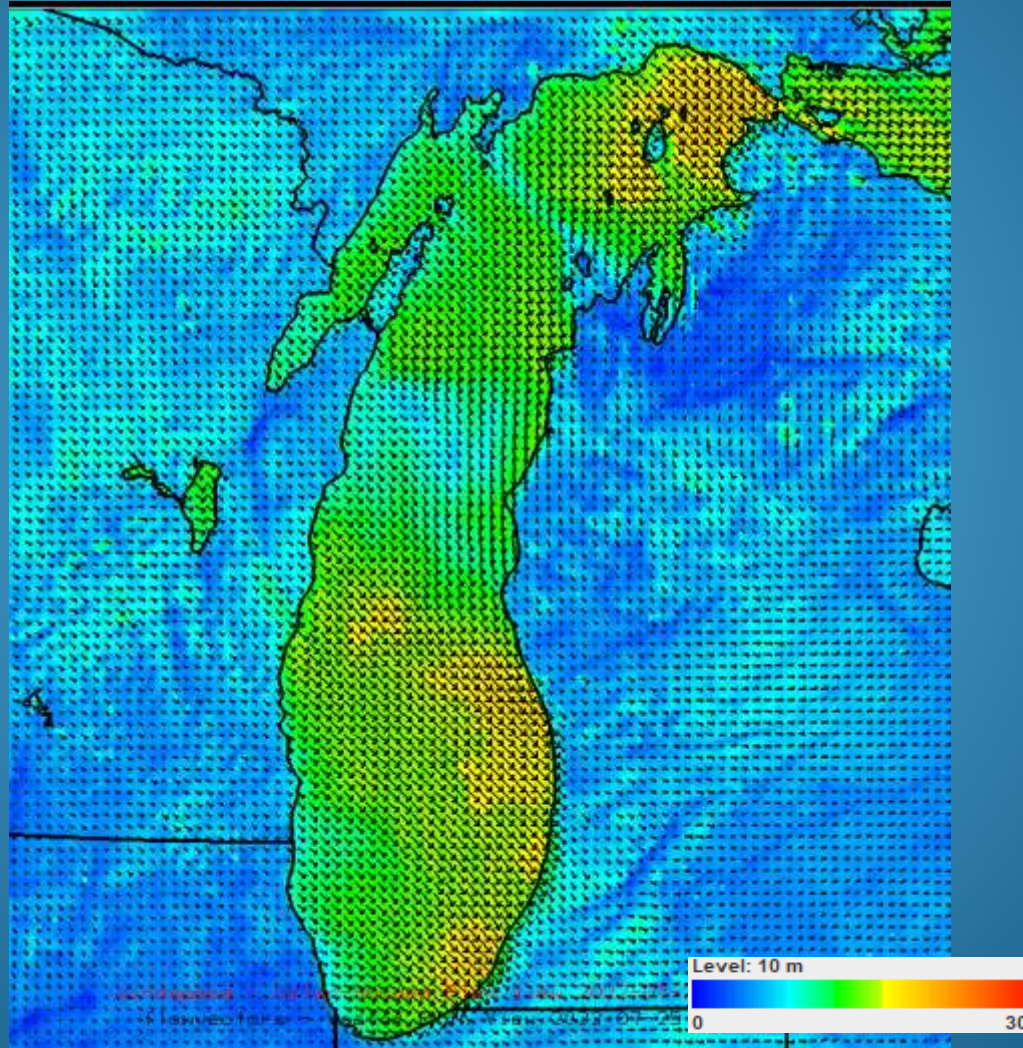
Sun Jul 24 07 PM EST  
Sun Jul 24 06 PM CST



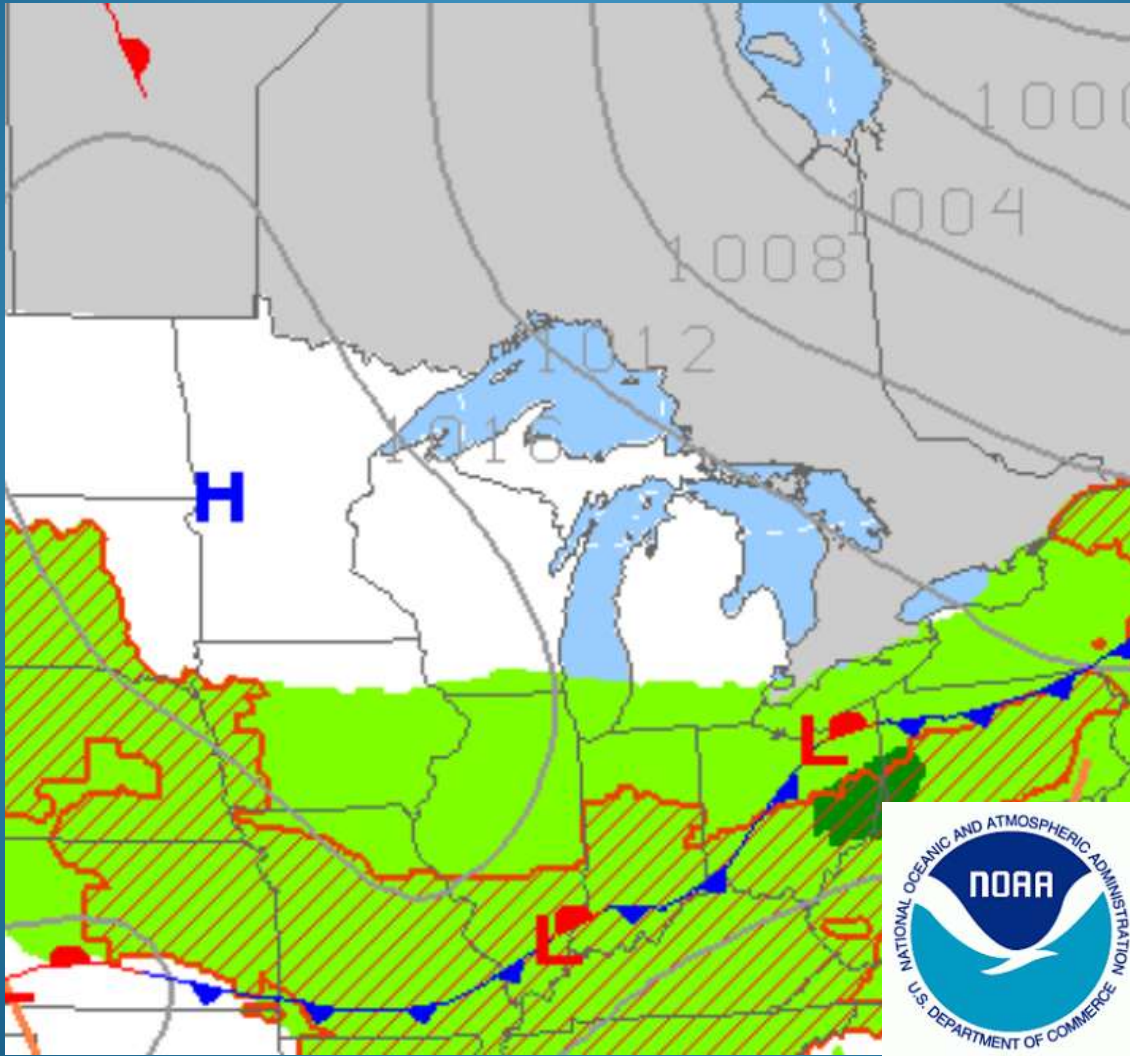
Init Time: 2022-07-22 0700 UTC

Forecast Hour: 65

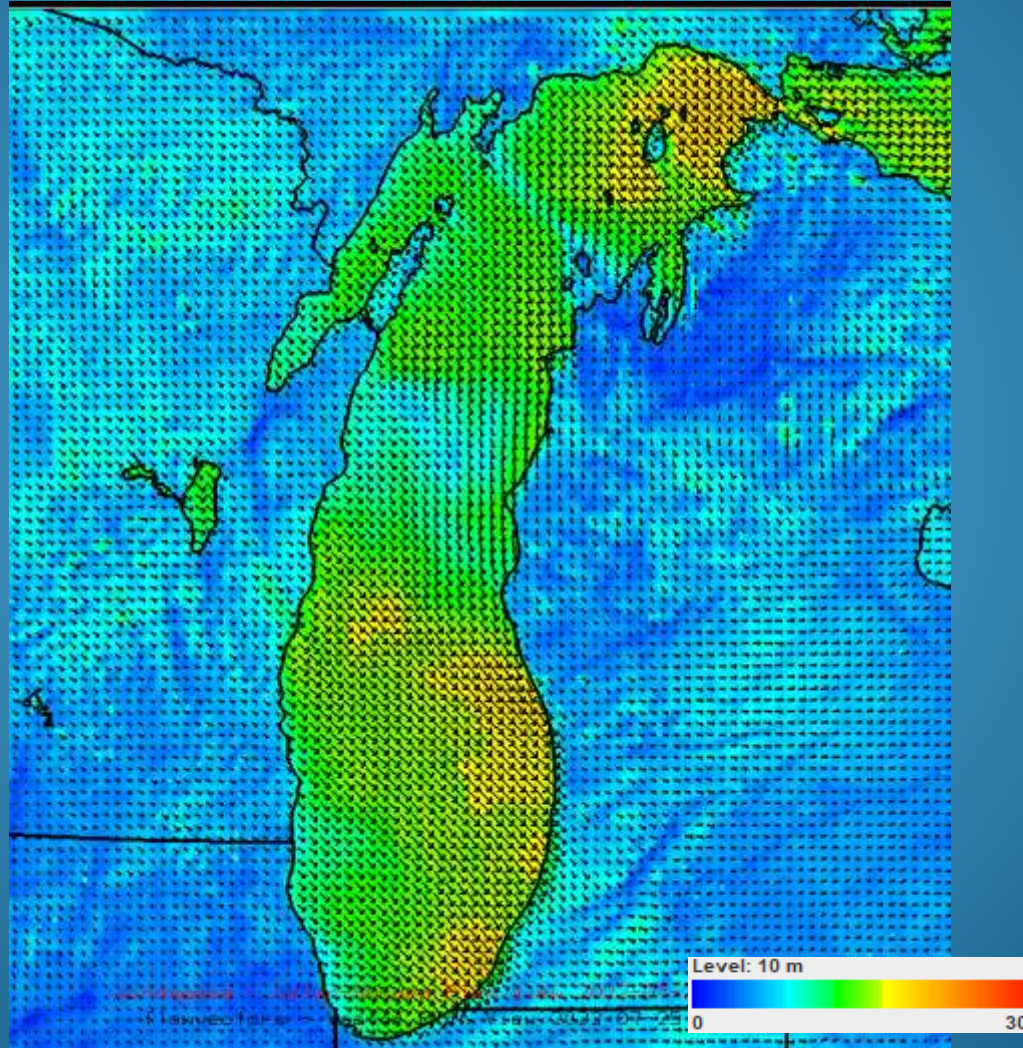
# Surface Wind Forecast – 0100 MONDAY



# Surface Weather Map – 0700 MONDAY



# Surface Wind Forecast – 0700 MONDAY



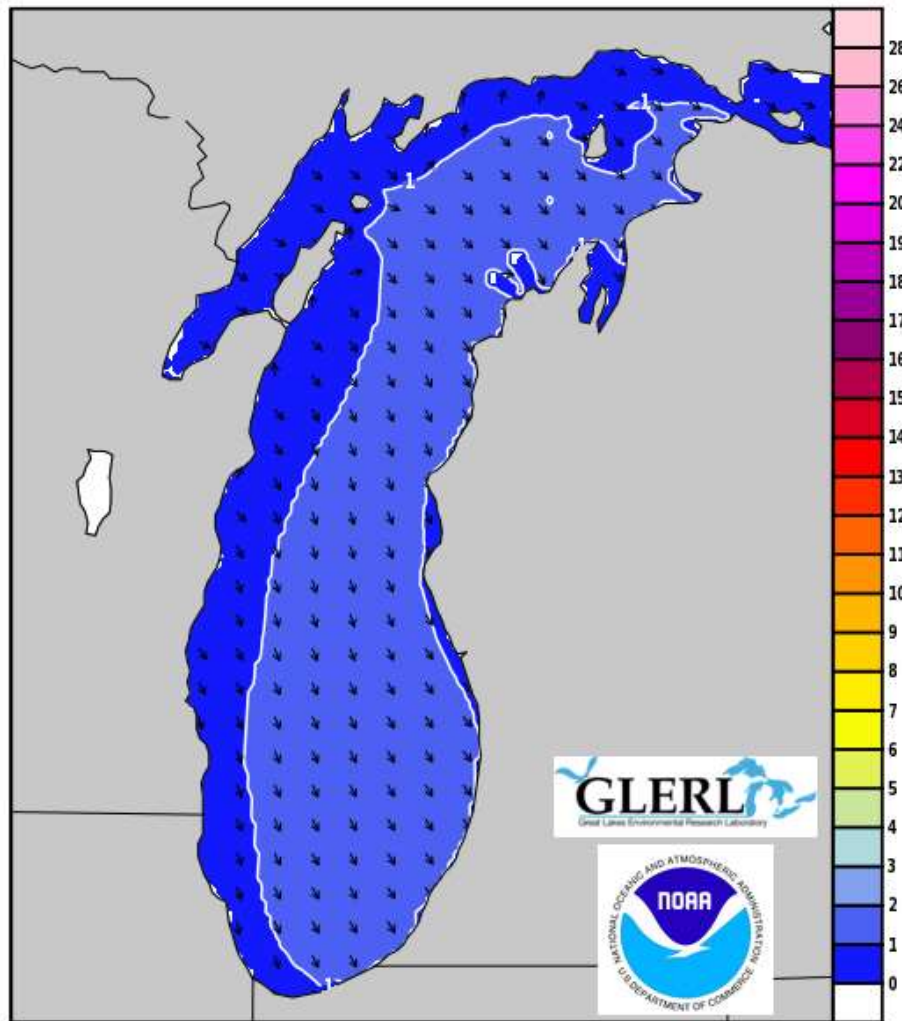
# Wave Forecast – 0700 MONDAY

Wave Watch III Sig WaveHeight (ft) & Dir

Valid Time: 2022-07-25 1200 UTC

Mon Jul 25 07 AM EST

Mon Jul 25 06 AM CST



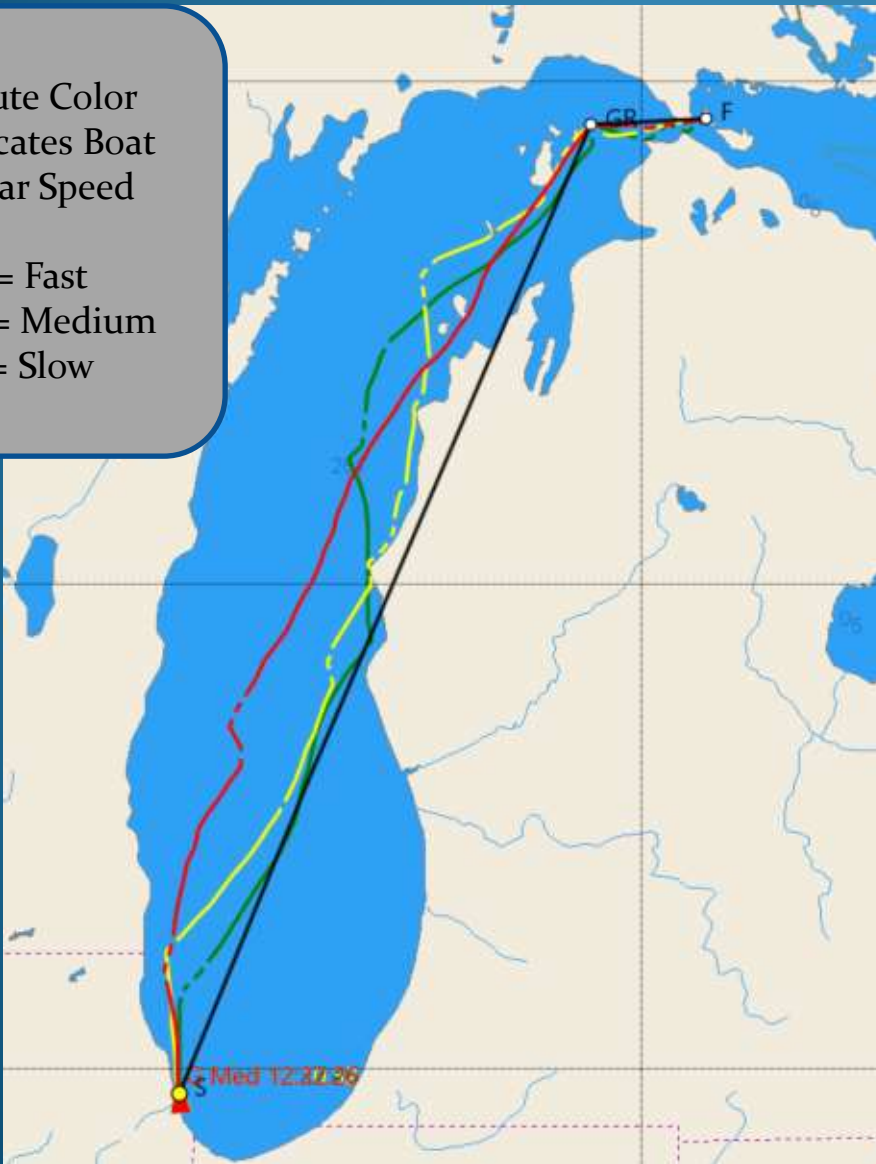
Init Time: 2022-07-22 0700 UTC

Forecast Hour: 77

# Optimum Route Analysis – Cruising Division

Route Color  
Indicates Boat  
Polar Speed

- = Fast
- = Medium
- = Slow



← WNW/NW gradient upper  
Late Sunday, firming and  
becoming consistent Monday.

← Cells likely Saturday eve to  
Sunday morning. Some SEVERE  
possible. Winds variable around  
Cells. Trend toward NW Sunday.

← Some patchiness overnight,  
Especially mid-lake. Building  
S/SW gradient Saturday with  
Lake breeze enhance MI side.

← Winds mostly hold at sunset but  
More left-shifted out in the mid-  
lake.

← Light-moderate SSW gradient  
Backed SSE on lake breeze.  
Trending right late PM.